

OFFICIAL VISITOR GUIDE

「 THE TWEED 」



VISITTHETWEED.COM.AU

Welcome to The Tweed

IMAGINE A PLACE WHERE SPARKLING SEASIDE VILLAGES, FULL OF THE BEST IN FOOD, COFFEE AND SURF BREAKS, GIVE WAY ALONG WIDE RIVERS TO EXPANSIVE GREEN PLAINS AND COUNTRY TOWNS FULL OF ART, FARMS AND FRIENDLY WELCOMES.

It's The Tweed, a place of sacred stories and contemporary spirit; where coast, river and valley villages offer an unforgettable break away from the everyday.

There are World Heritage-listed national parks and millennia-old Gondwana rainforest, along with events celebrating wellness, food, sport and music. Choose your ideal stay from luxury resorts and country homesteads to easy camping and on-trend glamping.

From the buzzing hum of Tweed Heads to the coast-hugging hamlets of Kingscliff and Casuarina, Cabarita Beach and Pottsville, you'll find celebrated chefs, skilled baristas, live music and aquatic adventures.

Along the Tweed River are boat cruises, farms growing fresh produce, makers of awarded gin and rum, crafters of must-eat cheese and quenching beer. Learn about our past at a museum housed in history itself, visit galleries and take home works from local artisans. Discover new walking and biking trails that celebrate the beauty and adventure of the lush Tweed hinterland.

From all these places, the majestic Wollumbin Mount Warning is always in sight, a distinctive landmark and remnant of a once-towering ancient shield volcano, that lets you know you've arrived at The Tweed.

To plan your next Tweed holiday go to VisitTheTweed.com.au
Share your holiday snaps [#thetweed](https://www.instagram.com/thetweed) [@thetweed](https://www.facebook.com/thetweed) [@thetweed_nsw](https://www.tiktok.com/@thetweed_nsw)



This Official Visitor Guide is an initiative of The Tweed Tourism Company, the official tourism development and destination marketing agency for The Tweed through a partnership with Tweed Shire Council.

P: 1800 674 414 | E: info@thetweed.com.au

- 02 Quintessential Tweed
- 04 Tweed Essentials
- 06 Map
- 08 Beside the Sea
- 26 Go with the River Flow
- 36 Gorgeous Valley Vibes
- 58 What's On Tweed
- 60 Feel Welcome Here
- 62 Naturally Gifted



ACKNOWLEDGEMENT OF COUNTRY

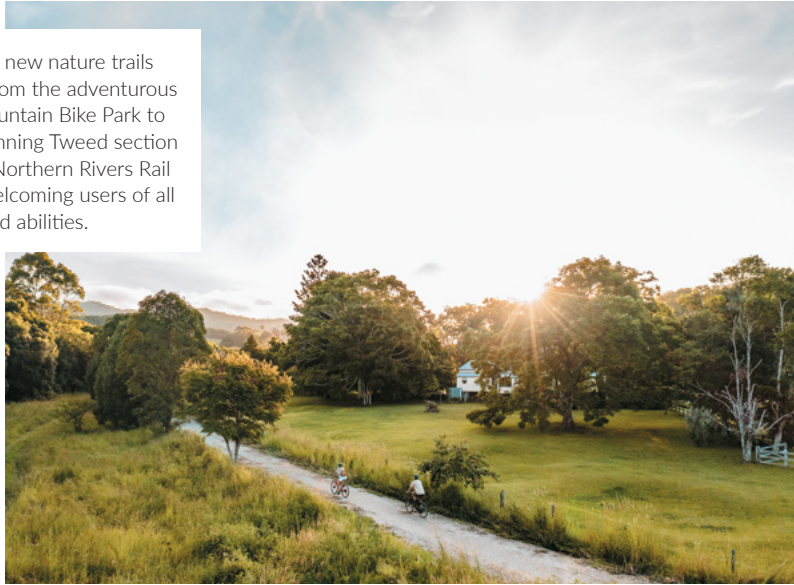
We wish to acknowledge the Ngandowal and Minyungbal speaking people of the Bundjalung Country, in particular the Goodjinburra, Tul-gi-gin and Moorung - Moobah clans, as being the traditional owners and custodians of the land and waters within the Tweed Shire boundaries. We also acknowledge and respect the Tweed Aboriginal community's right to speak for its Country and to care for its traditional Country in accordance with its laws, customs and traditions.

Quintessential Tweed

SOME HOLIDAY MUST-DOS

1

Explore new nature trails (p44) from the adventurous Uki Mountain Bike Park to the stunning Tweed section of the Northern Rivers Rail Trail, welcoming users of all ages and abilities.



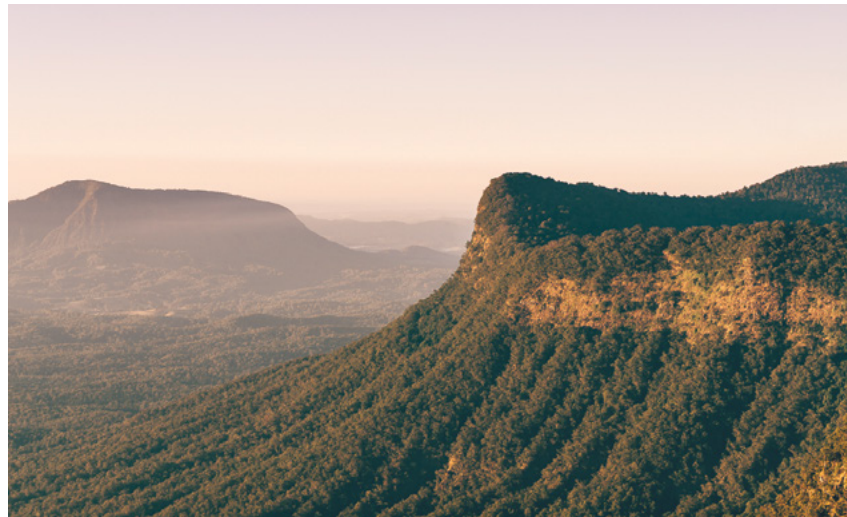
2

Dine out on the region's ever-evolving food reputation from hatted chefs to awarded restaurants, with delicious menus built on local produce.



3

Take a walk in our gorgeous national parks (p62) from easy trails to longer hikes – don't miss Pinnacle Lookout in the Border Ranges National Park with sweeping views across the Tweed caldera.



4

Tour Husk Distillers (p34) to learn how the famous Ink Gin is made, along with Australia's first agricole rum, made from cane sugar harvested at the Husk farm.

5

Cruise the mighty Tweed River (p26) and learn more about the region in a stunning setting.

6

Experience our paddock to plate way of life at working farms with their own fresh food menus and visit dairy farms making irresistible cheeses and yoghurts.

7

Be creatively inspired (p39) at the Tweed Regional Gallery & Margaret Olley Art Centre with stunning exhibitions and an original Monet masterpiece on show.

8

Surf famous breaks or take a tour out to see dolphins and swim with turtles, as well as spotting migrating whales in season.



9

Learn about the area's indigenous history, culture and peoples at Minjungbal Aboriginal Cultural Centre, at the Tweed Regional Museum's Life|Land|Culture exhibition and aboard specific cultural cruises along the Tweed River.

Tweed Essentials

CLIMATE

Northern New South Wales enjoys a mild, year round climate with highs around 30 degrees celcius in summer (December to February) and 20 degrees in winter (June to August). Overnight temperatures get as low as around 10 degrees in winter. Our wettest month is typically February with a subtropical wet season rainfall.


SEASONALITY

Visitor seasons are aligned with major national holiday periods, sunny weather and school semester breaks. Accommodation rates and availabilities fluctuate with low, shoulder or high season periods.

- **Low season:** April – August
- **Shoulder season:** February – March and October – December
- **High season or holiday season:** December – January, March – April and September


PATROLLED BEACHES

Our beaches are gorgeous and inviting and best enjoyed in the right conditions and when safe to swim. Listen to the advice of our Surf Lifesavers at all times and swim between the red and yellow flags on patrolled beaches.

 Check where to swim and current beach conditions before diving in – you can find up-to-date details at beachsafe.org.au

VISITOR INFORMATION CENTRES

Call into one of our two Visitor Information Centres (locations can be found inside the back cover) to meet a friendly local and get more details on what to do and where to go.

 **P:** 1800 674 414
E: info@thetweed.com.au

Fly Direct to Gold Coast Airport

Uniquely located on the Queensland and New South Wales border, Gold Coast Airport is the gateway to the Tweed. Connecting 26 destinations to the region and offering over 400 flights per week from Australia, New Zealand, Asia and beyond.

Gold Coast Airport is located only minutes from the Tweed Coast and a short 40-minute drive to Byron Bay and surrounds, meaning you can start enjoying your holiday sooner.

Gold Coast Airport is serviced by an extensive range of ground transport operators, including rental cars, taxis, limousines, rideshare services and bus operators. Facilities in the terminal include bars, cafes, duty-free shopping, retail stores and free high-speed wireless internet. Over 2,000 parking spaces are also available and can be pre-booked online.



Together we're going places. **GOLD COAST AIRPORT**

GOLDCOASTAIRPORT.COM.AU

Take some time out in The Tweed with flights from **\$49pp.*** Beauty!

Fly direct to the Gold Coast Airport
and the Tweed is just a short drive south.



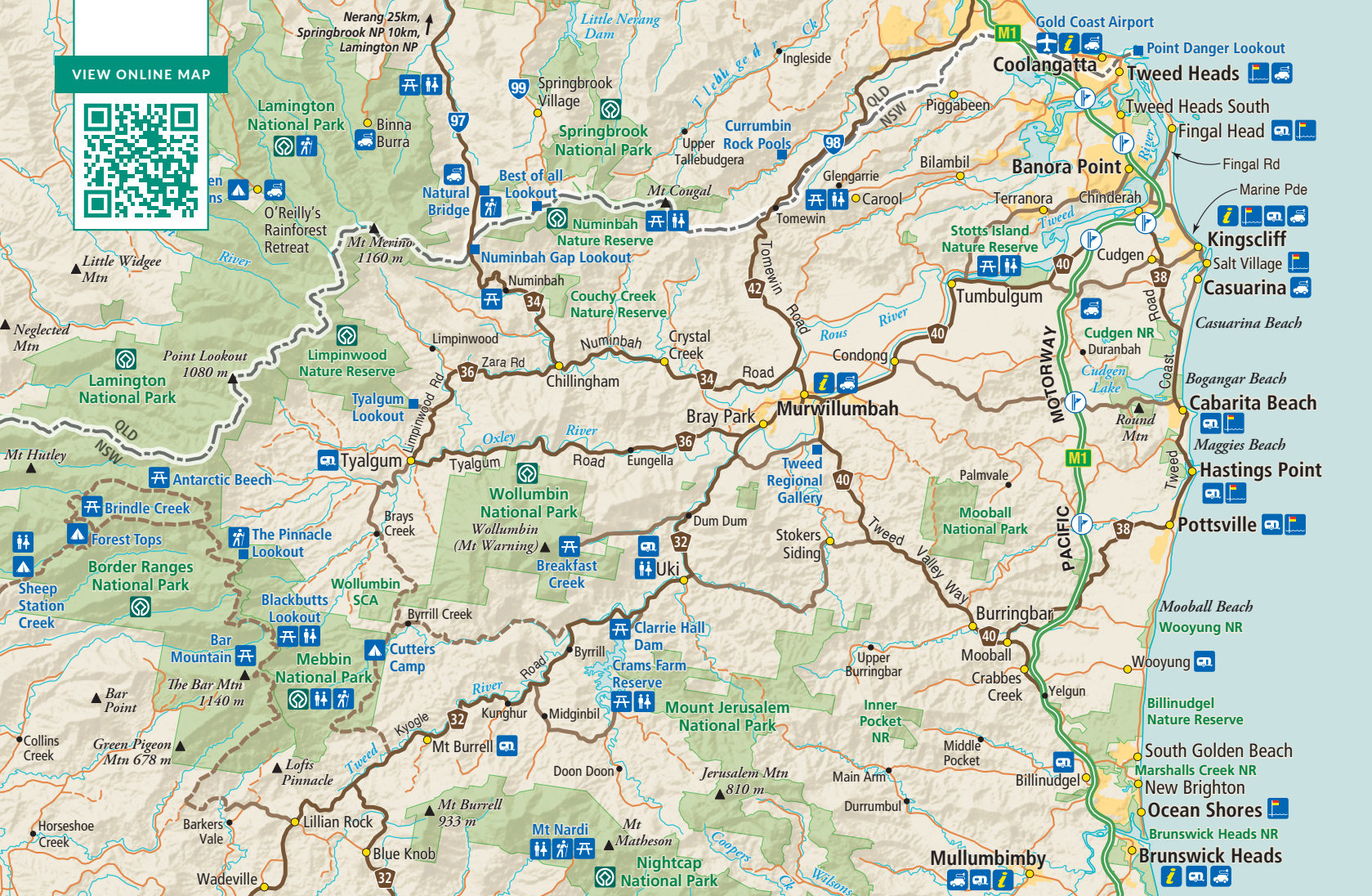
Download the
Fly Bonza
app to book

onza

Here for Allstralia

*Prices vary by route. Prices quoted are one way, per person, excluding checked bags and seat selection booked via the Fly Bonza app. Prices subject to availability & Gold Coast routes are subject to regulatory approval. Payment fees and T&Cs apply, visit the Fly Bonza app. Images: The Tweed Tourism Co.





VIEW ONLINE MAP



Brisbane: 90mins | Broadbeach: 30mins

KEY TO MAP SYMBOLS

- Pacific Highway; Interchange
- Tourist route
- Thoroughfare (sealed)
- Thoroughfare (unsealed)
- Local road; Track
- Information centre
- EV Charge Point
- Caravan park
- Public toilet
- Picnic area
- Camping area
- Hiking or walking trails
- World Heritage Area
- Safe swimming beach
- Point of interest
- Mountain peak



Map produced by flatEARTHmapping.com.au
Contains data © copyright Geoscience Australia 2019

Byron Bay: 15mins
Ballina Byron Airport: 30mins
Sydney: 8hrs, 30mins

GETTING HERE & AROUND

Travelling to The Tweed is easy with convenient and affordable connectivity to interstate and overseas destinations.

EV CHARGERS

EV Chargers can be found throughout The Tweed at key locations such as Tropical Fruit World, M|Arts Precinct and selected accommodation. Search 'NSW EV Charging Map' to find an up-to-date list via Transport NSW.

DRIVE

The Pacific Motorway, a major coastal arterial highway, provides easy access north to the Gold Coast and further south into New South Wales.

Major hire car companies operate from all airports, along with coach transfer options, chauffeur cars and taxis, as well as designated ride-share pick-up points.

BUS

Bus and coach access around the region is also stress-free with a range of services available along the east coast with Greyhound Australia, Premier Motor Service and New South Wales TrainLink.

Call into our Visitor Information Centres for details on local public transport with timetables and destinations, or call the team on 1800 674 414.

FLY

Situated between the Gold Coast and Ballina, and about an hour and a half drive to Brisbane, The Tweed is well connected by air to all major Australian destinations, and also an extensive selection of international destinations.

Gold Coast Airport is the nearest to our region, just a 10-minute drive to Tweed Heads, with flights to major Australian cities

and many regional centres as well as connections to Asia, New Zealand, USA and Europe.

Ballina Byron Gateway Airport, around 45 minutes' drive to the south of The Tweed, has daily services to Sydney and Melbourne and regular flights to Newcastle.

Brisbane Airport has flights operating 24/7 from across Australia and around the world.

NATURE TRAILS

Hire a bike or set off on foot to explore our many nature trails. By the beach, discover coastal villages from Kingscliff and Cabarita to Pottsville along the 17km coastal path. Explore a range of country tracks with the Uki Mountain Bike Park, a network of national park hikes and the Northern Rivers Rail Trail.

**Times and distances indicated on this map are approximate only.*



Beside the Sea

GORGEOUS BEACH VILLAGES HUG THE TWEED COASTLINE, FROM THE URBAN VIBRANCY OF TWEED HEADS IN THE NORTH TO THE SERENITY OF POTTSVILLE BEACH IN THE SOUTH.

Dotted along the Tweed Coast Road and offering almost 40 kilometres of pristine beaches, our seaside towns are distinctive, yet also weave seamlessly into one another as you journey along the scenic stretch from Fingal Head, Kingscliff and Casuarina to Cabarita Beach, Hastings Point and Pottsville.

Our coast combines down-to-earth ease with sophisticated chic — from relaxed waterfront holiday parks to luxury stays with a view, and local coffee hangs to awarded dining, there are endless ways to relax into your next Tweed beach break.

Fingal & Chinderah

AS THE LONG, STRAIGHT STRETCH OF COASTLINE FROM TWEED HEADS TRACES SOUTH, FINGAL HEAD JUTS OUT TO SEA, POINTING TOWARDS NEARBY COOK ISLAND.

At Fingal Head is a rocky outcrop known as Giant's Causeway, so named after the similar UNESCO Giant's Causeway World Heritage Site in Ireland, which was formed by lava flows halted by the cool ocean, resulting in rock pillars that rise like steps to a peak with views clear out to the horizon. For the local indigenous people, Fingal Head is known as Booninybah, said to mean 'home of the giant echidna', with the volcanic columns resembling an echidna's spiny covering.

In tranquil Fingal, you'll also find fun surf breaks, laid-back fishing spots, eateries and caravan and camping options close by.

Nearby Chinderah is a restful riverside getaway, just a stone's throw from the beach and ideal for a bit of R&R for those who like to take it easy on holiday.

Set on the banks of the Tweed River, your Chinderah holiday to-do list could include relaxed boating with a fishing rod, SUP or kayak paddling, slow walks along the winding river, 18 holes at the local course, browsing and buying antiques with a marine theme, lazy picnics in the park, coffee at a popular riverside cafe, fish and chips in the sun and good cheer at the local tavern overlooking the water.



Cook Island Aquatic Reserve

COOK ISLAND IS A STUNNING NATURAL SANCTUARY FOR MANY BIRDS AND MYRIAD MARINE LIFE, INCLUDING GREEN, HAWSKBILL AND LOGGERHEAD TURTLES THAT ARE FOUND IN THE WATERS YEAR-ROUND.

One of only 13 aquatic reserves in New South Wales, Cook Island Aquatic Reserve is around 600m off shore from Fingal Head and comprises 80 hectares of protected marine area, which nurtures fish habitats and threatened species, conserves marine biodiversity and supports research and education.

Formed by lava flows from a vast shield volcano over 20 million years ago, the island has both hard and soft corals, with boulders forming walls and caves descending to the sandy sea floor.

It's thought that Cook Island, Julian Rocks near Byron Bay and the Solitary Islands further south, are a kind of 'stepping stone' pathway for tropical marine species moving up and down along the coastline.

Arguably the stars of the show are the resident green sea turtles, ever-present in and around the Cook Island Aquatic Reserve and best encountered on an organised snorkelling tour out from Fingal Head, with sightings possible all year around.



Temperate, subtropical and tropical species of fish, crustaceans and molluscs are also abundant in the complex rocky reefs of Cook Island, which also accommodates nesting seabirds, seeking a calm place to birth and raise their young.

As a safe harbour, Cook Island and its surrounding reserve provide habitat and resource for countless marine animals, including pufferfish and clownfish (hi Nemo!), as well as nudibranchs, stingrays, wobbegongs and even leopard sharks over summer.

Several threatened or protected species are also found in the reserve, including the giant Queensland groper, black rockcod, gold spotted rockcod and the grey nurse shark.

Cook Island is a popular base for aquatic tours, with snorkelling trips available to explore the island's marine life, along with scuba diving, boating, snorkelling and whale watching in season (fishing is not permitted within the reserve). Cook Island itself is a nature reserve with recreational use not permitted.

For more details head to the Department of Primary Industries website.



Kingscliff, Galt & Casuarina

DISCOVER BUSTLING HUBS TO SUIT ALL HOLIDAY NEEDS, FROM A CAFFEINE BOOST TO GLOBAL DISH, AQUATIC ADVENTURES AND BOUTIQUE BROWSING OR JUST A SKATE, CYCLE OR STROLL ALONG THE WATER'S EDGE.

Always a favourite beach holiday spot, Kingscliff pairs upmarket resorts with beachfront cabins and a celebrated food scene with laidback vibes that feel familiar, down-to-earth and generous.

Everything is close by in Kingscliff village, whether you need to get the heart rate up with a surf lesson, paddle along Cudgen Creek or a snorkel beside green

sea turtles; or you're wanting something more chilled like a foreshore bike ride, beach-view sip, round of lawn bowls or a spot of retail therapy.

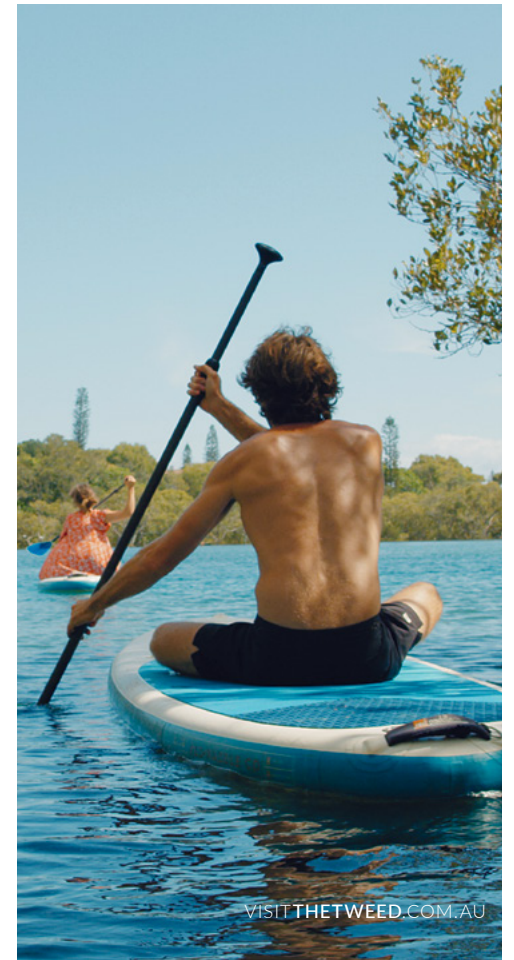
If you need more Tweed holiday inspiration while in Kingscliff, pop into our light-filled and friendly Visitor Information Centre, right beside the sea.

At the neighbouring Salt Village, you'll find familiar five star resorts just a short step from rolling waves and a literal world of food, from seafood and Italian to Mexican, Indian and Thai, as well as French pastries come morning.

Neighbouring Casuarina, named for the wispy she-oak trees that fringe the beachfront, is a quiet local enclave that welcomes holiday-makers to enjoy its

casual ambience and quality cuisine from coffee and pastries to hip Mexican drinks, sourdough pizza and welcoming local eateries.

You'll not go hungry in this part of The Tweed, with nationally acclaimed restaurants tempting you at every turn, and a focus on locally sourced food, sustainable practices and impeccably styled interiors.





CUBBY BAKEHOUSE

162 Chinderah Bay Drive, Chinderah
0458 958 852 | gday@cubbybakehouse.com
cubbybakehouse.com

If you're obsessed with almond croissants, go weak at the knees for cream-filled eclairs and can't say no to a gooey cookie, then follow your nose to Chinderah's Cubby Bakehouse.

Everything you see in the cabinet, from the fresh strawberry tarts to the decadent custard-filled muffins and jam-topped cream-bun eclairs, is made from scratch on-site, with fresh batches lining the cabinet across the day. Grab a spot inside or go alfresco amongst the flower gardens and rip into Cubbys brunch favourites like the bacon and egg banh mi, green-tea noodle salad with karaage chicken and French toast. You'll find Cubby in the heart of Chinderah overlooking the Tweed River.



BLACK SHEEP BOTTLE SHOP

62 Cylinders Drive, Kingscliff | 02 6674 5995
kingscliff@blacksheepbottleshop.au

A proudly independent and family-owned bottle shop stocking a massive range of Australian and New Zealand wines as well as a large range of old-world wines from France, Spain and Italy. We have arguably the largest range of craft beers in Kingscliff and a fantastic range of crafted spirits including gins, whiskies, bourbons, vodkas and more. Show this listing in-store, spend over \$20 & receive a complimentary mystery bottle of wine *conditions apply



EARTH BEER COMPANY

592 Cudgen Road, Cudgen
0491 729 326 | hello@earthbeercompany.com.au
earthbeercompany.com.au

In the rolling hills of Cudgen on a working avocado farm overlooking Wollumbin, we believe making time for the good things life has to offer. With delicious handcrafted beers, a character-filled tasting room and sun-drenched beer-garden just a stones throw from the Tweed Coast & Coolangatta, this is the perfect escape to quench your thirst. Welcome to Earth Beer Company.



SWIM WITH WHALES

WHALE WATCHING

RESEARCH TOURS

SWIM WITH WHALES

July - October

Look beneath the surface into the world of the majestic Humpback Whale. Join Cooly Eco Adventures for an exclusive, unforgettable experience swimming with these gentle giants off the Gold Coast.



WHALE WATCHING

June - November

Join us for an intimate safari style whale-watching experience. Observe these beautiful creatures at eye level, while you also soak in this rich and diverse stretch of coastline.

SWIM WITH TURTLES

All Year Round

Enjoy a fun day out on the ocean, engaging with turtles, marine life and nature with our ecologically conscious Swim with Turtles Tour!

BOOK NOW

0411 600 503

coolyecoadventures.com.au



Discover a farm paradise, offering a fun, informative adventure for the whole family.

Tropical Fruit World hosts farm tours that include a tractor tour, fruit tasting, farm animals and a wildlife boat cruise.

Our cafe serves dishes using only the finest farm grown ingredients, and our farm marketplace offers a range of artisan farm made products.

Only a 10 minute drive from Kingscliff.

Plan your visit at www.tropicalfruitworld.com.au



ASK A LOCAL

Shona Fuller – Tropical Fruit World

I'm the Sales and Promotions Manager at Tropical Fruit World and I absolutely adore my job! It's so rewarding collaborating with incredible partners and showcasing our beautiful Tweed region to the world. I've been a Tweed local for over a decade and its diverse offerings never cease to amaze me.

The Tweed is my slice of heaven, with stunning beaches, a picturesque hinterland and a foodie scene that is thriving. Whether it's the coastal vibe or the countryside charm, The Tweed has something for everyone. I'm so lucky to call this place home!

EXPLORE: *I'm all about hinterland adventures, cruising through quaint towns like Uki and Tyalgum. I love soaking in the country air, people-watching and daydreaming about living on one of those gorgeous farms!*

SIP: *My day kicks off with a coffee from Bread Social, followed by a refreshing juice at Tropical Fruit World. And when it's time to unwind, nothing beats a frosty Rising Sun from Earth Beer or an Avocado Kolsch. Cheers to that!*

EAT: *Choosing a favourite eatery in The Tweed is tough with so many fantastic options! For a homely touch, I whip up something with fresh produce from the Durambah Road Farmers Market. If I'm not in the mood to cook, Gallura Italian's seafood pizza is my go-to. And for those special nights out, it's a toss-up between Tweed River House and Potager.*

SHOP: *I'm a fan of unique finds, which makes the Halcyon House atelier a treasure trove. And when it's time to gear up for the farm, it's Work n Country Murwillumbah.*

DO: *Sunny days call for a swim and a stroll at Fingal Beach, while lazy Sundays are for long lunches with friends at Paper Daisy. My fur baby Archie and I enjoy exploring dog-friendly spots which we're lucky enough to have plenty of. I love catching the latest art exhibitions at the Tweed Regional Gallery and cannot wait to see the Monet currently on show.*



IN2SURF

0406 318 162 | josh@in2surf.com.au
in2surf.com.au

Discover the thrill of surfing with In2surf, the Tweed Coast's longest-running surf school. Owned and operated by a lifelong local and former pro surfer, In2surf offers diverse lessons for all ages and skill levels. Whether you're a beginner or a seasoned surfer, we have the perfect experience for you.

Our nationally recognised kids' program, "Surfgroms," is the ideal start for ages 5-12, consistently ranking among the top 5 schools in Australia. Join us for weekly holiday sessions or 8-week programs aligned with the school term.

With highly dedicated instructors, In2surf guarantees a high-quality learning experience, sharing their passion for the ocean and the sport.



HYUNDAI SURFING AUSTRALIA HPC

9 Barclay Drive, Casuarina
 02 6671 0000 | hpc@surfingaustralia.com
surfingaustraliahpc.com

Take your surfing to the next level with the team of expert coaches and state of the art facilities at the Hyundai Surfing Australia High Performance Centre (HPC).

In addition to supporting Australia's best surfing athletes, the HPC offers world leading coaching programs for novice, intermediate and advanced surfers of all ages.

The facility features onsite accommodation for 42 guests, state of the art training and recovery facilities, conference and meeting rooms, Olympic trampolines, skate ramps, plus a fleet of Hyundai vehicles.



Watersports Guru!

Established 2009

Our Adventures!

- + Big 3 of the Sea
Whale-Dolphin-Turtle Tour
- + Kayaking
- + Paddle boarding
- + Kids activities
- + Team building



+ Snorkel with the Turtles



Bookings & enquiries

0430 082 890
fun@watersportsguru.com
watersportsguru.com





HALCYON HOUSE

21 Cypress Crescent, Cabarita Beach
02 6676 1444 | info@halcyonhouse.com.au
halcyonhouse.com.au

Australia's most unique beachside property. Halcyon House is a boutique hotel with a spectacular beachfront location in Cabarita Beach. Featuring 22 rooms with bespoke interiors you can spend your Halcyon days poolside sipping cocktails, dining in Hatted restaurant Paper Daisy or relaxing at Halcyon Spa.



CABA BREAK HOLIDAY APARTMENTS

49 Tweed Coast Road, Cabarita Beach
02 6674 8931 | enquiries@cababreak.com.au
cababreak.com.au

Four spacious 4 Bedroom Apartments in the heart of Cabarita Beach. Perfect location for large family groups or corporates. The Pandanus Room is available with your stay to host your own family or corporate event.

Walk to the beach, shops and cafes on your doorstep.



THE BEACH RESORT CABARITA

2-6 Pandanus Parade, Cabarita Beach
02 6670 0900 | bookings@thebeachcabarita.com.au
thebeachcabarita.com.au

Luxury self-contained apartments on absolute Beach frontage in the quintessential beachside village of Cabarita Beach. Spacious, beautifully appointed 2, 3 & 4 bedroom apartments offer options for every occasion. Heated pool & spa, gym, bar & restaurant complete your Beachside experience. Cafes, cocktail bars, shopping, art gallery, day spa, your every indulgence catered for in beautiful Cabarita Beach.



OAKS CASUARINA SANTAI RESORT

9 Dianella Drive, Casuarina
1800 882 360 | santai@theoaksgroup.com.au
oakshotels.com/en/oaks-santai-resort-casuarina

Oaks Casuarina Santai Resort features a blend of contemporary and traditional Balinese design giving a haven of space and comfort. Relax under a leafy cabana by the grand pool and spa, dine at the onsite restaurant 'The Spice Den' or pamper yourself at our onsite wellness spa. The Resort features one and two-bedroom self-contained apartments with inclusive Wi-Fi and Foxtel.



M O S T A W A R D E D R E G I O N A L R E S T A U R A N T



FINS RESTAURANT

BEACH SIDE SEAFOOD DINING IN KINGSCLIFF, NSW
WILD & LOCALLY CAUGHT SUSTAINABLE FISH
COCKTAILS, WINES, OYSTER BAR
CELEBRITY CHEF STEVEN SNOW

Who we are

FINS AT PLANTATION HOUSE

AWARDED TOP 25 WEDDING VENUE IN AUSTRALIA
15 MIN FROM GOLD COAST AIRPORT
WELCOMING UP TO 250 GUESTS
BESPOKE LUXURY EVENTS



A W E D D I N G V E N U E L I K E N O O T H E R



Cabarita Beach

THE TWEED'S COASTAL TOWNS MAY HAVE SMALL FOOTPRINTS BUT THEY FIT A LOT IN TO EACH STEP AND CABARITA CAPTURES THIS PERFECTLY.

It's where boutique luxury meets the simple joy of rock-hopping and delectable menus that spark national conversation sit comfortably alongside surf shops, coffee stops, cocktail bars, homeware stores and art galleries.

Caba, as it's known on the street, effortlessly strikes this balance between indulgence and simplicity, with heavenly scented day spas and beach-view bars adjoining quiet family beaches, famous surf breaks and short walks to stunning viewpoints, such as Norries Headland.

Families and nature-lovers are drawn here for the sweet picnic spots and play-parks for kids, as well as the preserved flora and fauna of Cudgen Nature Reserve and the birdwatching and water play of nearby Cudgen Lake. Weddings and romantic holidays for two are also well catered for.

Accommodation in Cabarita ranges from beach-view apartments and stylish boutique luxury hotels to gorgeous holiday homes a stone's throw from the sea.



Hastings Point & Pottsville

FOR TRANQUILLITY, MEANDER FURTHER SOUTH ALONG THE TWEED COAST ROAD TO HASTINGS POINT AND POTTSVILLE, PROMISING VISITORS A RETREAT FROM THE HUBBUB OF LIFE AND A HOLIDAY REMINISCENT OF SIMPLER TIMES.

Back from the beach is a network of creeks and estuaries that guarantee endless water play and moments of calm.

The dark mangrove-coloured fresh waters of Cudgera Creek provide a stunning and shallow place to paddle with holiday park lodgings right at the banks, while the saltwater Mooball Creek is fed by the inlet at Potts Point, an ideal splash pool for kids.

In these sweet villages are coastal holiday highlights for all visitors, with fishing spots and waterplay, seaside picnics, fresh seafood and crisp fish and chips, laid-back caravan parks, local markets, a place to discover more about marine life and many more things sure to be on your relaxed holiday checklist.

Pottsville's food and drink scene ranges from casual coffee and aromatic bakehouse to a hip local bar for a laid-back sip and an unmissable Chef Hatted dining experience.



PIPIT RESTAURANT

Shop 4/8 Coronation Avenue, Pottsville
 0490 380 117 | hello@pipitrestaurant.com
pipitrestaurant.com

Pipit offers modern fine dining with a relaxed coastal sense of place. Menus focus on creative cooking, local seasonal ingredients and sustainable seafood. Dining is set around an open-plan kitchen to directly see the chefs in action.



WOORYUNG BEACH HOLIDAY PARK

515 Wooyung Road, Wooyung
 02 6677 1300 | info@wooyungbeach.com.au
wooyungbeach.com.au

Wooyung Beach Holiday Park is one of Tweed's best kept secrets, one of the very few remaining coastal bush campgrounds left on the East Coast of Australia. Enjoy an Old School camp, bring your dog and have a cosy campfire at your site. Make forever memories with loved ones. Surfing, fishing, bird and whale watching are popular on the 10kms of unspoilt beaches on our doorstep.



BOOK ONLINE HERE



MARINE DISCOVERY CENTRE

1 Tweed Coast Road, Hastings Point
 02 6676 1234 | marine@northstar.com.au
marinediscovery.com.au

North Star's Marine Discovery Centre Hastings Point is one of Australia's largest, privately funded museums. Its primary focus is teaching people how they can play a role in protecting and safeguarding our precious marine environment for future generations.

The Centre is a showcase of state-of-the-art light and sound technology, fitted with interactive digital terminals and world-class marine and coastal science displays. Join our eco-guides year-round as we conduct two-hour presentations where you can immerse yourself in the wonders of the deep, and the shallows too! You'll also have the chance to get up close and personal (via the microscope) with some interesting marine creatures.



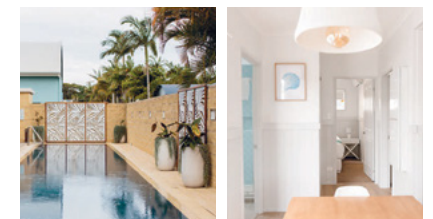
North Star. taking family holidays to the next level

Campsites, cabins, luxury villas, seasonally heated waterslides and pools, FREE kids club, licensed onsite bar & café, adults only leisure centre, just three minutes' walk to the beach and estuary.



Go to www.northstar.com.au, freecall 1800 645 790 or email info@northstar.com.au

1 Tweed Coast Rd, Hastings Point NSW
 FOLLOW US  





Go with the River Flow

FLOWING FROM THE SEA AND WEAVING ITS WAY INLAND BESIDE TOWNS BOTH PEACEFUL AND VIBRANT, THE MIGHTY TWEED RIVER IS A STUNNING WATERWAY INVITING EXPLORATION AT EVERY TWIST AND TURN IT TAKES.

Where better to start your journey from coast to country than along the expansive stretch of the Tweed River, as it flows from a small ocean inlet at Tweed Heads, between Durambah Beach and the northern tip of Fingal Head, crosses paths with the Rous and Oxley Rivers, and curves its way through the green towns of the valley and beyond.

Stretch out, breathe in and feel invigorated by a little river exploration at your own pace, from bustling Tweed Heads to peaceful Tumbulgum and onwards to Murwillumbah.

ASK A LOCAL

Kylie Petersen — Tweed Eco Cruises

Twenty-five years ago I was backpacking overseas when I got a call from my family to head home and help them start a new venture - Tweed River cruises! So I headed back and The Tweed became home. As a family business, we've worked hard, been resilient and adaptable, navigated highs to lows, laughs to arguments, and always back to laughs!

Tweed Eco Cruises has an amazing crew and the family is still involved - Dad will come down here telling me what to do, my sister saying why not add this to the cruises and my daughters trying to show me how to do social media! And Mum keeping the peace! I love what I do and the people that help make it happen, including our customers who come back year after year.

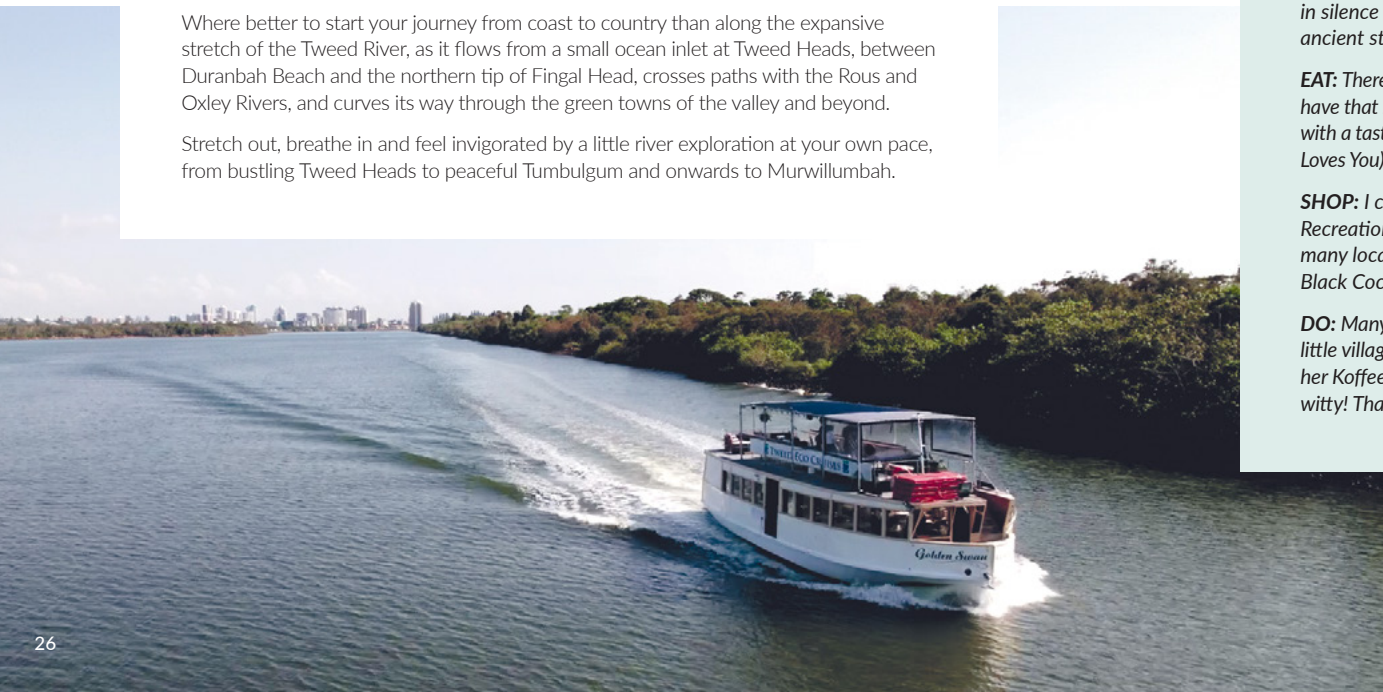
SIP: *We're passionate about supporting local on our cruises - we're like a floating platform where you can sample the best of the region! As well as local food - cheese, meats, relishes and fruit - we serve lots of delicious local sips from craft beers to gins, vodkas and rums from local distilleries.*

EXPLORE: *Stotts Island - in the middle of the Tweed River with over 300 species of trees and so much birdlife - is a very special place. I sit on the top deck of the boat sometimes in silence and am just in awe, thinking of the history of the old river steamers and ancient stories that the island and river hold.*

EAT: *There are so many wonderful restaurants! Potager and Fins are favourites, but for me I have that beautiful spot called home, overlooking Wollumbin Mt Warning, where I sit down with a tasty cheese board (my picks are a delicious Claude and Blue by Deb Allard of Cheeses Loves You) and a nice glass of red wine or an Aussie Lager from Earth Beer Company.*

SHOP: *I can't go past a good market - Makers and Finders in Murwillumbah and the Recreation Street markets in Tweed Heads are great. I also love M|Arts Precinct - so many local creatives! My favourite is artist Miss Heidi who paints local birds (I love the Black Cockatoos) and historic Tweed homes.*

DO: *Many people come here for the beautiful beaches, but I like to explore the many little villages across the region. I often start in Chinderah, getting a coffee from Kath and her Koffee Kart by the river. Fantastic coffee and she's great to have a chat with too, very witty! That's another reason I love The Tweed, so much diversity in scenery and people.*





Tweed Heads

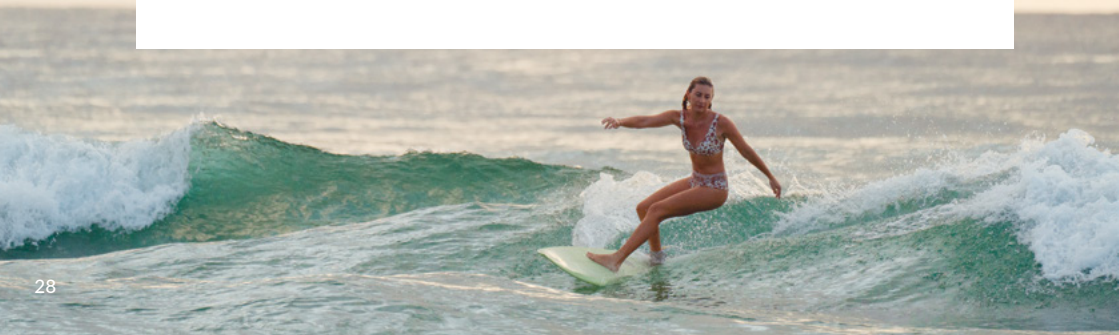
THE REGION'S NAMESAKE IS AN IDEAL COMBINATION OF FISHING AND RIVER CRUISING, WORLD-FAMOUS WAVES AND AN EVOLVING FOODIE SCENE.

Duranbah Beach may be less than 200 metres in length, but the break-wall of the Tweed River at the southern end forms a nice right-hand wave, loved by surfers from all over. If you're staying out of the water, head to Point Danger, a natural amphitheatre that invites holiday-goers to take in sweeping vistas.

Heading in from the coast, the stunning Tweed River plays host to peaceful cruise tour opportunities, or you can hire a boat to track your own river path.

Throw in a line for bream, flathead or jewfish (note there is a recreational fishing fee in NSW).

Tweed Heads is fast becoming a go-to neighbourhood with hip cafes, trendy boutiques, local bakeries, well-stocked delis, artisan drinks to go and even a retro-record store, all in and around Bay Street. Don't miss the regular local markets and all access playground, Livvi's Place at Goorimahbah – Place of Stories at Jack Evans Boat Harbour.




TWIN TOWNS
Meet you there

MUSIC | BARS | DINING | RESORT

WWW.TWINTOWNS.COM.AU

TWIN TOWNS
**CONFERENCE
 & FUNCTION
 CENTRE**



CONFERENCE & FUNCTION ROOMS AVAILABLE



TWEED ECO CRUISES

2 River Terrace, Tweed Marina, Tweed Heads
07 5536 8800 | info@tweedecocruises.com
tweedecocruises.com

Embark on a journey with Tweed Eco Cruises along the Tweed River and Terranora Lakes. With over 25 years of experience, we offer exceptional cruising options for family and friends. Indulge in our signature Tweed River and Rainforest Cruise, featuring a delectable lunch sourced from local farmers and fishers. Witness the breathtaking Stotts Island rainforest, observe local bird life, and catch a glimpse of dolphins. For more excitement, gather the kids for the Bushtucker and Crabs Cruise, where crabbing, fishing, and yabbing take center stage.

- River & Rainforest Cruises
- Morning Tea Cruises
- Bushtucker & Crabs Cruises
- BBQ Boats



TWEED HARBOUR MOTOR INN

135 Wharf Street, Tweed Heads
07 5536 6066 | info@tweedharbourmotorinn.com
tweedharbourmotorinn.com

Known for its friendly customer service with excellent property reviews, Tweed Harbour Motor Inn is walking distance to Club Tweed, Tweed Hospital and merely 700 metres from both the beach and shopping centre, with the Gold Coast Airport just 3 kilometres away. It enjoys a tranquil setting, perfect for a peaceful night's rest!



PIONEER COUNTRY WEDDINGS & EVENTS

98 Fraser Drive, Tweed Heads
0475 089 433 | hello@pioneer-country.com
pioneer-country.com

The Gold Coast and Tweed's authentic farm wedding and events venue. 170 acres of lush farmland, ocean & hinterland views, licensed until midnight, in-house catering from 20 to 220 guests, plantation-style chapel, fairy-lit barn, wood-burning fireplaces and 10 mins from the Gold Coast Airport & accommodation.



All Day Dining



Bar



Function Rooms



Benny's Arcade



Marina

OPEN 7 DAYS

156 WHARF STREET, TWEED HEADS NSW
PH 07 5506 9988 | IVORYWATERSIDE.COM.AU

[f](https://www.facebook.com/IVORYTAVERNMARINA) IVORYTAVERNMARINA | [i](https://www.instagram.com/IVORYWATERSIDE.MARINA) IVORYWATERSIDE.MARINA

DISCOVER MORE





THE BELLE RIVERHOUSE

18 Riverside Drive, Tumbulgum
0466 627 843 | hello@thebelleriverhouse.com.au
thebelleriverhouse.com.au

A beautiful, 100-year-old holiday home in the historic village of Tumbulgum, nestled by the river in the Tweed Valley. Recently renovated into a luxurious boutique holiday house that can comfortably sleep up to 16 guests. This Queenslander style home has a huge wrap-around verandah with stunning views of the Tweed River and the green rolling hills of the valley.



AAA PRIVATE TRANSFERS

Tweed Coast | 0410 503 330
michael@aaaprivatetransfers.com.au
aaaprivatetransfers.com.au

Our friendly team provides premium private transfer services based around the Northern Rivers and major hubs. Service areas include The Tweed Coast to Brisbane and surrounding locations. Look no further for high quality, personalised, discrete and professional direct door to door passenger transfers. We maintain our vehicles to the highest standards.



MINJUNGBAL MUSEUM & CULTURAL CENTRE

Cnr Kirkwood Rd & Duffy St, Tweed Heads South
07 5524 2275
minjungbalmuseum@tweedco-op.com.au
facebook.com/MinjungbalMuseum

We are located within the Tweed Heads Historic Site, which adjoins the Ukerabagh Nature Reserve. This cultural heritage site provides a facility for all people to explore and enjoy the beauty of the native coastal bushland.

Learn from the detailed exhibits in the Museum about how Aboriginal people lived. Explore the natural surrounds and see an authentic Bora Ring. Visit the museum and take home a souvenir from the shop.

This beautiful site is just 5kms south of the border.



HOLIDAY ACCOMMODATION TO SUIT EVERY NEED!

Let your dream holiday *begin*

Whether you're needing a quick weekend getaway, romantic escape, surf trip to world class beaches, family fun holiday or pet-friendly options, we have all your needs covered!



EXPLORE THE SOUTHERN GOLD COAST & NORTHERN NSW

CHOOSE FROM OVER 150 HOLIDAY RENTALS



Coolangatta, Rainbow Bay, Kirra Beach, Billunga, Tugun, Currumbin, Tweed Heads, Kingscliff & Hastings Point.



BOOK DIRECT & SAVE
www.rbrholidays.com.au



Tumbulgum

ROLLING OFF THE TONGUE AS TUMBULGUM, THIS TWEED RIVER TOWN IS SIMPLY GORGEOUS.

Arching around the shoulders of the river, Tumbulgum is where the Tweed and Rous Rivers intersect and where a serene pace of life invites a moment's pause.

Tumbulgum has a tucked-away, timeless ambience, set back quietly from the main road and opening up to surprise first-time visitors with its picturesque setting. Try the ready hustle of cafe fare, settle in for an indulgent high tea overlooking the Tweed River or relax with a classic pub lunch at the friendly heritage tavern.

Visitors to Tumbulgum can take things at their own pace, with a simple picnic and spot of fishing, spotting birdlife and taking in the beauty of the Tweed River with views to Wollumbin Mount Warning in the distance.

Or book in for a distillery tour to learn how the unique Ink Gin and Husk Rum are made with a focus on sustainability and distinctive flavour. For the more active, BYO a SUP or kayak to navigate these ancient waters.



EXPERIENCE
HUSK
— FARM —
DISTILLERY



TOURS. COCKTAILS. KITCHEN. VIEWS.

OPEN 7 DAYS FROM 11AM

THE HOME OF HUSK RUM & INK GIN

We're farmers and distillers, making spirits with provenance that reflect this land.

Use the code **THETWEED** for 10% off distillery tours.

Visit huskdistillers.com to book.

reservations@huskdistillers.com | (02) 6675 9149



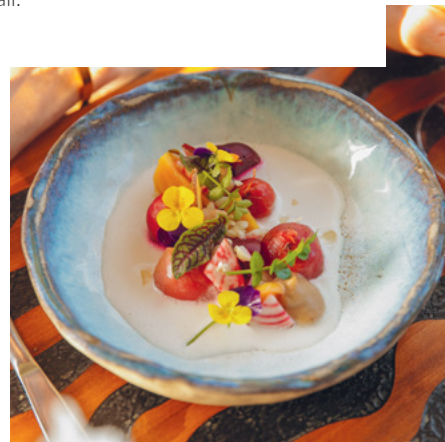


Gorgeous Valley Vibes

FROM MURWILLUMBAH TO TYALGUM, UKI TO BURRENBAR AND EVERYWHERE ELSE IN BETWEEN, YOU'LL FIND A JOYFUL COMMUNAL ENERGY IN OUR COUNTRYSIDE VILLAGES THAT IS ENCHANTING.

It's in the fresh air, the contrast of high peaks and stretching plains and the arresting green vistas at every turn in the road. It's in the farm-to-plate ethos and food with a view, the innate creative vitality and the flow between rivers and mountain ranges.

Enjoy a country drive, visit art spaces and artisan stores, sample fresh local foods or simply breathe in the fresh air on a nature trail.



ASK A LOCAL

Pat Fleming — Bolt & Buckle

My wife Sharon and I own Bolt & Buckle in Murwillumbah, and also have a wholesale business that we run from our property a few minutes out of town. We moved from Brisbane four years ago and just love the Murwillumbah community and The Tweed region - it's such a special place with so many special people.

EXPLORE: *We love visiting Clarrie Hall Dam to enjoy a nature walk. We also like to get out to the surrounding villages like Uki or Pottsville or attend cool events like Stokers Siding Fifteen Minutes of Fame.*

SIP: *I don't drink anymore, so we'll have to stick to my remaining vice of coffee! There's so many great places to get coffee where I live and, by the coast, one of my favourite places is Pandanus Cafe at Cabarita - great coffee and great views of the ocean with a beachy feel.*

EAT: *I'm the cook at home and I love creating Indian and Sri Lankan dishes. The Murwillumbah Farmers Markets are some of the best I've been to so we head there for fresh produce. If we're heading out... again so many choices but one of our first dining experiences when we moved here was Flutterbies pizza night at Tyalgum. Such a cool place, the pizza is awesome, the live music is brilliant and you can take the dogs!*

SHOP: *I like to create, buy or restore rustic bits and pieces so I'm in my happy place when I'm visiting places like Red Neds at Tweed, Burringbar Gallery, Heath's Old Wares at Burringbar or in a hardware shop like Budd's Mitre 10 in Murwillumbah.*

DO: *We love taking in live music or movies at the Regent Theatre, dining out at Tweed River House, Bistro Livi or Potager and going for a bike ride on one of the many quiet back roads in beautiful rainforest.*





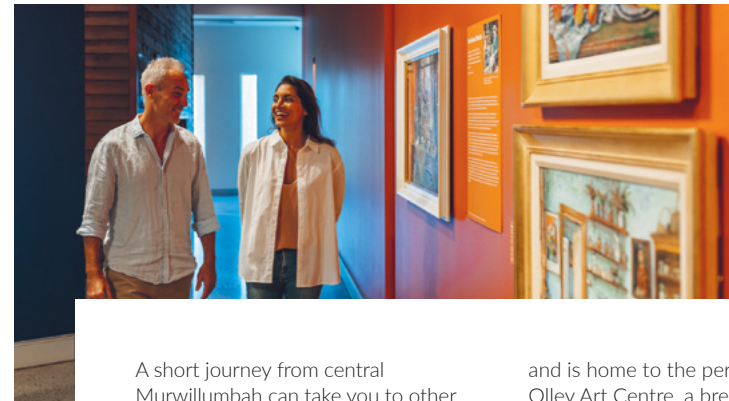
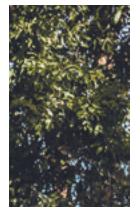
Murwillumbah

TAKE TO THE STREETS OF MURWILLUMBAH TO DISCOVER ORIGINAL ART DECO FACADES AND FEATURES, ALONG WITH LOCAL FOOD STORES, CELEBRATED DINING SPOTS AND HIP CAFES, FASHION BOUTIQUES AND ESTEEMED ART SPACES.

Start your valley visit by discovering our region's evolving history, local culture and fascinating stories at The Tweed Regional Museum in Murwillumbah, itself housed in a stunning heritage building, standing proudly since 1915.

Organic food-stores, hip lunch spots, riverside cafes, inviting boutique stores and a rich art scene are even more reason to put Murwillumbah on your must-visit list.

Be enthralled at a unique arts precinct, a combination space that is home to a host of working artists, a tempting cheese shop, sweet book store and nationally awarded dining. Starting life as a 1955 car showroom, the precinct today is a vibrant space for all kinds of creatives to make, show and sell their work, from photographers and painters to ceramicists, a florist and more. A treasured art deco theatre is also part of the precinct, home to arthouse films, travelling festivals and must-see movies.



A short journey from central Murwillumbah can take you to other worlds at the Tweed Regional Gallery & Margaret Olley Art Centre.

Set high with sweeping green valley views, the Gallery is currently hosting the famous Monet masterpiece, *Meules, milieu du jour [Haystacks, midday]* 1890, on loan until 2025 from the National Gallery of Australia as part of its Sharing the National Collection initiative.

Throughout the year, this leading art space also welcomes national touring exhibitions and showcases local artists

and is home to the permanent Margaret Olley Art Centre, a breathtaking homage to one of Australia's most loved artists, comprising a meticulous re-creation of Olley's famous home studio in Sydney and the Margaret Olley Memorial Gardens, a tranquil final resting place for the artist.

For more holiday inspiration and to browse for souvenirs and locally made gifts, be sure to visit our helpful volunteers at the Visitor Information Centre located at the Murwillumbah Railway Station, which is also the trailhead of the Northern Rivers Rail Trail.





Enjoy a dynamic program of exhibitions, activities and events with spectacular views of the Tweed Valley. The re-creation of Margaret Olley's home studio is on permanent display.

Photo: Kiff & Culture @ kiffandculture



Unique experiences....
in unexpected places

 **TWEED REGIONAL GALLERY
& MARGARET OLLEY ART CENTRE**

The Tweed Regional Gallery & Margaret Olley Art Centre is a Tweed Shire Council Community Facility and is supported by the NSW Government through Create NSW.



Open Wed – Sun | 2 Mistral Rd, South Murwillumbah NSW | gallery.tweed.nsw.gov.au | [f](https://www.facebook.com/tweedregionalgallery) [i](https://www.instagram.com/tweedregionalgallery) [tweedregionalgallery](https://www.tweedregionalgallery.com.au)

 **TWEED
REGIONAL
MUSEUM**

museum.tweed.nsw.gov.au
[@TweedRegionalMuseum](https://www.instagram.com/TweedRegionalMuseum)
2 Queensland Road, Murwillumbah



BOLT & BUCKLE

11 Commercial Road, Murwillumbah
02 6608 3645 | shop@boltandbuckle.com.au
boltandbuckle.com.au

It's rare to find a beautiful store with shelves upon shelves of alluring things just for the gents - and even more unique to discover such a store in an Art Deco town! Discover exactly this rare combination at Bolt & Buckle in Murwillumbah, a rustic retail store just perfect for the vintage man, down-to-earth bloke or uncomplicated gentleman.



JUJU'S CAFE

2/13 Wharf Street, Murwillumbah
02 6672 5483 | jujusmurwillumbah@gmail.com
jujusmurbah.com.au

Found in the heart of town, 600 metres from Murwillumbah rail trail station, and around the corner from the Tweed Regional Aquatic Centre. With great coffee, fresh food and friendly staff, JuJu's restaurant café offers dine in and takeaway breakfast and lunch. See website for JuJu's menu and seasonal blackboard specials, cafe street library, and feature artist.



THE IMPERIAL HOTEL

115 Murwillumbah Street, Murwillumbah
02 6672 7000 | hello@imp.com.au
imp.com.au

Located in the heart of Murwillumbah, The Imperial Hotel, a meticulously restored 1931 bistro, bar and hotel, marries historic country charm with modern luxury. Featuring 28 renovated ensuite rooms and an elevated menu boasting beloved Aussie pub favourites. As a cherished landmark, The Impy fosters a sense of community by hosting diverse and exciting events, promoting local collaboration and connection. Welcoming various tour groups, The Imperial Hotel accommodates enthusiasts ranging from avid bikers exploring the Rail Trail to global photographers capturing the region's stunning scenes. From early morning to late night, it's a buzzing atmosphere complete with live music and delectable cuisine.



TWEED RIVER HOUSE

131 River Street, Murwillumbah South
02 6672 5269 | info@tweedriverhouse.com.au
tweedriverhouse.com.au

Panoramic riverside dining

On the banks of the Tweed River in Murwillumbah, resides the hatted Tweed River House.

Celebrate the Northern River's fresh produce as we recreate the great nouvelle classics of France with a contemporary Australian style.

The magnificently restored century-old grand manor house where you can dine enjoying sweeping hinterland views from the River Verandah, or in the elegant dining room under pressed metal ceilings and palm fans.

Delight in lighter bites at the riverside Lawn Bar.



A VIEW OF MOUNT WARNING BED & BREAKFAST

28 Glenock Road, Dum Dum
0420 388 620 | accom@viewofmtwarning.com.au
viewofmtwarning.com.au

A uniquely designed purpose built B & B with stunning views. Enjoy the peace, privacy and tranquillity from your own verandah. Swim laps in the salt pool, soak in the hot tub on the roof top terrace or meander around the gardens. Breakfast cooked specifically for you, using fresh local produce.



THE FOUNDRY MURWILLUMBAH

90 Murwillumbah Street, Murwillumbah
02 6672 1193
[instagram.com/thefoundrymurwillumbah](https://www.instagram.com/thefoundrymurwillumbah)

The Foundry Murwillumbah - 'News, Lifestyle & Gift Emporium' boasts a carefully curated range of luxurious and versatile gifting options for the entire family - all within a lovingly restored 1908 building. Engage your senses and browse the beautiful range of giftware, children's toys, magazines, fashion stationery, games/books and confectionery.



Choose Your Own Trail Adventure

THERE ARE NEW NATURE TRAILS TO DISCOVER IN THE LUSH TWEED HINTERLAND, FROM AUSTRALIA'S NEWEST RAIL TRAIL TO A MOUNTAIN BIKE PARK WITH OPTIONS FOR ALL RIDERS.

NORTHERN RIVERS RAIL TRAIL

The Tweed section of the Northern Rivers Rail Trail welcomes walkers, runners and cyclists of all abilities to journey along a smooth, flat and picturesque trail, passing by farms, crossing over heritage bridges and navigating through original train tunnels, all the while surrounded by soothing verdant landscapes.

This section of the Northern Rivers Rail Trail is the first stage of what will eventually be a 132km long trail via the Byron region to Casino, along the original railway line that was built in 1894. Running from Murwillumbah to Crabbes Creek, the Tweed section of the trail is 24 kilometres end-to-end and connects via the villages of Dunbible, Stokers Siding, Burringbar and Mooball.

Leave the car behind and take time to stop and explore along the way. Discover galleries, meet local artisans, enjoy a coffee break, visit friendly farm animals, have lunch at a country town and learn more about the history and culture of The Tweed.

UKI MOUNTAIN BIKE PARK

Already high on the wish-list of nature-lovers is another new outdoor adventure in the Tweed hinterland, with the Uki Mountain Bike Park now open for exploration!

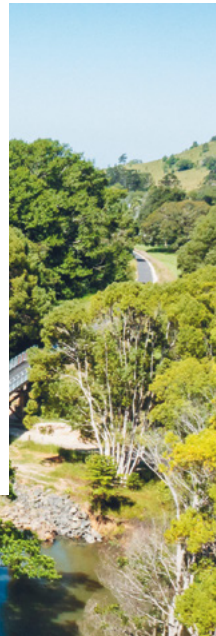
Covering more than 6.4 kilometres, with eight mountain bike tracks and a fun pump track for kids, the new Park has something for all riders. There are green tracks for beginners, blue for the more confident and a black diamond track for the very experienced.

Located in the gorgeous hinterland town of Uki and surrounded by country vistas and views to Wollumbin Mount Warning, the trails include natural terrain, constructed features, obstacles, drop-offs and bridges. It's set to become the hottest new go-to for mountain bikers and adventure-seekers alike so make sure it's on your next Tweed outdoor holiday itinerary.



MAXIMISE YOUR TRAIL TIME WITH AN OVERNIGHT STAY

Why not plan an extended trail getaway with a few nights' stay in our country villages and time to navigate the Northern Rivers Rail Trail, the new Uki Mountain Bike Park and hike some of the Border Ranges National Park while you're at it! Choose from luxe lodgings perfect for two, farmstays for families or gorgeous holiday homes with group getaways in mind.



NO WHEELS, NO WORRIES

If you don't have your own wheels, bike hire is easy with a number of local companies at the ready to help you with a full range of bicycles available to hire, including e-bikes. Make sure your bike is kitted up with a bell to signal other riders as passing and a light or torch to guide your passage through tunnels. Shuttle services are also on offer for Rail Trail riders that want to cycle only the end-to-end 24km section or even just to explore shorter sections of the trail.





MURWILLUMBAH VISITOR INFORMATION CENTRE

Murwillumbah Railway Station,
284 Tweed Valley Way, South Murwillumbah
02 6672 1340 | murwillumbah@thetweed.com.au
visitthetweed.com.au

Visit us on the Murwillumbah Railway Station located at the head of the Northern Rivers Rail Trail. Our friendly locals, armed with decades of knowledge, are eager to help you plan your perfect Tweed holiday. Explore a curated selection of unique souvenirs and products by talented local artists, producers and makers to take home as mementos of your time in The Tweed.



PEDALS AND PICNICS

8 Railway Street, Murwillumbah
0401 000 460 | hello@pedalsandpicnics.com.au
pedalsandpicnics.com.au

Explore NRRT uniquely with Pedals and Picnics! Pedal through the breathtaking trail on bikes or ebikes. Elevate your experience with DIY Picnics, Grazing boxes, or full Destination Picnics. Perfect for couples, groups, families, and corporates. Let us handle the details, so you can cherish everlasting memories forever. More than an just a picnic



BETTER BY BIKE

0408 402 287 | info@betterbybike.com.au
betterbybike.com.au

Come ride the Northern Rivers Rail Trail – The Best Day Ever. Better By Bike provides on-trail E-bike hire or E-bike hire with Return Shuttles to your accommodation. Alternatively try our Guided Evening Glowworm Tour. The trail is suited to all ages and riding abilities. We cater for families with infants and young ones, couples and groups large and small, servicing the entire trail from Murwillumbah to Crabbes Creek.



VALLEY EBIKES

8 Railway Street, Murwillumbah
0439 318 934 | ride@valleyebikes.com.au
valleyebikes.com.au

Experience a thrilling adventure in nature with Valley Ebikes, the premier Fat Tyre Ebike hire on the Northern Rivers Rail Trail. Revel in the utmost comfort with 4-inch fat tires and cushioned seats. As a local family business conveniently located at the trail's start, we accommodate all fitness levels and ages. Visit our website to book the ultimate Ebike adventure!



JINGI WALLAH

Welcome to the Northern Rivers Rail Trail



Discover 24 km of stunning landscapes, local villages and historical wonders that make the Northern Rivers Rail Trail a must visit destination. This is the ultimate experience for walkers, cyclists and people of all ages and abilities.



northernriversrailtrail.com.au



Uki, Burringbar & Stokers Siding

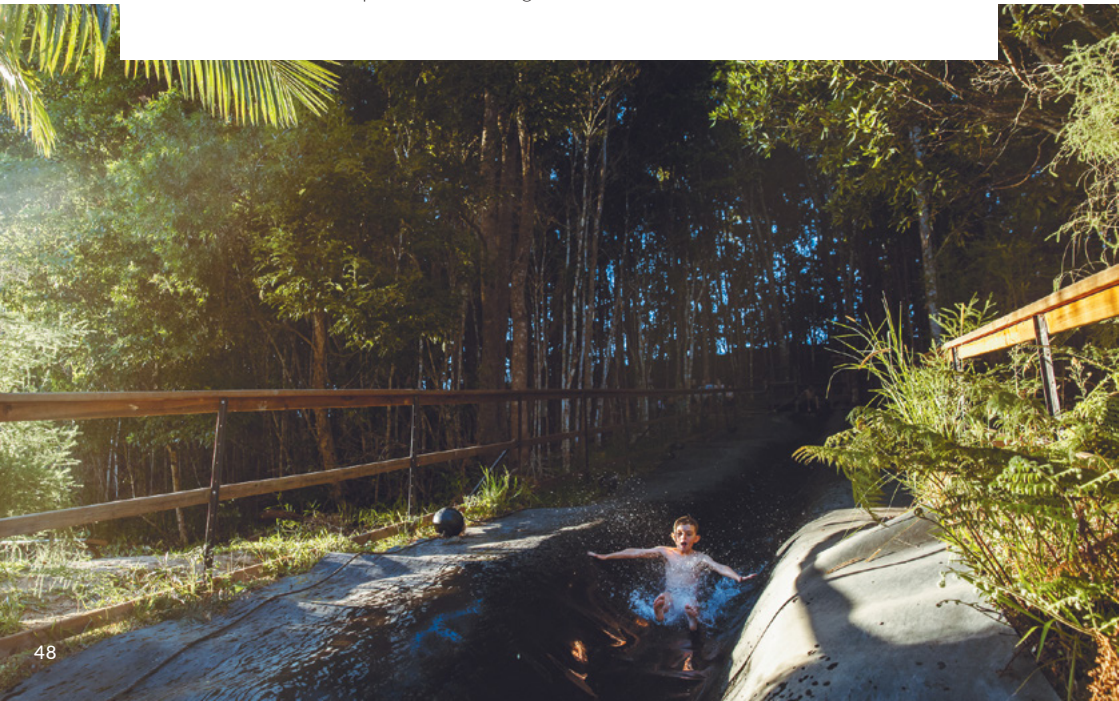
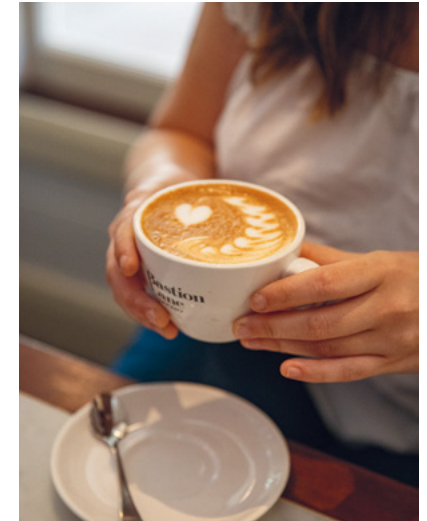
THE TWEED VALLEY IS A HINTERLAND TOURING DREAM, DOTTED AS IT IS WITH SMALL VILLAGES OF BIG CHARACTER, FOUND ALONG COUNTRY ROADS WITH STUNNING GREEN VIEWS AROUND EVERY CORNER.

Nestled at the foothills of Wollumbin Mount Warning, Uki is a place where community spirit hums and visitors can ease into a calm but connected pace of life.

It's where village markets sell local food and crafts from an old buttery and the School of Arts and nearby galleries proudly show the works of resident artists. It's where lunch comes with a mountain vista, and art and coffee, along with postal services, are viewed and brewed in a historic post office building.

Uki is now also home to one of Australia's newest biking hot-spots, the Uki Mountain Bike Park, an exhilarating network of trails for beginners to advanced.

There are famous local pies and a much loved, sprawling country pub, a colourful fair trade shop, live music and cafe choices, healing retreats and day spas and luxury accommodation set in lush rainforest spaces.



Just a short and pretty drive from Uki, heading east along the gently undulating Smiths Creek Road, you'll find Stokers Siding and Burringbar, each featured villages along the Northern Rivers Rail Trail.

Stokers' enterprising past as a thriving farm and rail town was recast when trains no longer stopped here. Instead, a tree-change community found the area for its tranquillity; a well-known pottery was established and rainforest retreats took the place of farms and

industry. Stop here to browse art in the old pottery space and visit a local farm stay with friendly farm animals and a cute cafe.

Nearby in small and beautiful Burringbar is quintessential country life with tall, green trees, roadside fruit stalls and hand-crafted cheese from local dairy farms, a must-visit vintage store, natural wine shop and welcoming coffee spots, plus a friendly general store, a sweet flower and gift shop and all the essentials.



HEATH'S OLD WARES & COLLECTABLES

19-21 Broadway, Burringbar
02 6677 1181 | heathsoldwares@gmail.com
heathsoldwares.com.au

Ross & Eva Heath invite you to spend some time wandering through Heath's Old Wares, in the beautiful village of Burringbar. Open 7 days, 9am to 5pm, it's an eclectic treasure trove, you just never know what you will find. Amazing stocks of old tools, memorabilia, industrial antiques, ladders and more.



MAVIS KITCHEN

64 Mt Warning Road, Uki
02 6679 5664 | home@maviskitchen.com.au
maviskitchen.com.au

Restaurant, garden, organic produce, cabins and spectacular space for weddings and events. Situated below Wollumbin-Mt Warning, and surrounded by lush rainforest, the restaurant and cabins in an enormous garden are warm, peaceful and uniquely beautiful. Have lunch in the cool interior, or on the original verandah that allows spectacular views of the lawns, gardens and mountains.



TWEED VALLEY WHEY FARMHOUSE CHEESES

6091 Tweed Valley Way, Burringbar
02 6677 1111 | tweedvalleycheeses@gmail.com
tweedvalleycheeses.com.au

A farmer owned and operated artisan cheese factory and gelato bar using their own farm fresh milk. Explore the farm shop for artisan products and pottery. Enjoy country style fare on the shady verandah, whilst sipping a local brew or Brown Bros wine. Specialising in delectable cheese and antipasto platters. Milkshakes for the kids. A true pasture to platter experience.



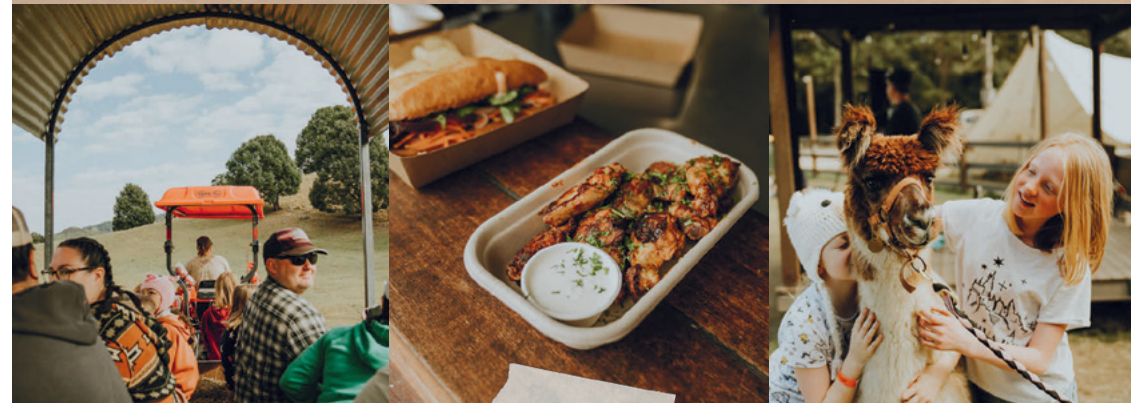
LA ROCHER ECO RETREAT

7 Minto Place, Smiths Creek
0402 272 727 | mail@larocher.com
larocher.com

Nestled in the Tweed Valley, La Rocher offers four luxurious bespoke villas with breathtaking views of Wollumbin/Mt Warning and the Border Ranges while emphasising eco-conscious design and sustainable practices. Set within 117 acres of native forest, it's an ideal escape for romantic getaways, nature immersion or just a tranquil hideaway.



Wide open spaces & good old fashioned fun



Day Visits



Food & Coffee



Farm Animals



Tractor Rides



Accommodation



Camping

WE'RE LOCATED ON THE NORTHERN RIVERS RAIL TRAIL

- Open 7 days -

Visit our website for more information or to book your day visit or holiday adventure.



MOUNT WARNING RAINFOREST PARK

153 Mount Warning Rd, Mount Warning
 admin@mtwarningrainforestpark.com
 02 6679 5120 | mtwarningrainforestpark.com

Mt Warning Rainforest Park is nestled at the foot of the World Heritage listed Wollumbin National Park. This is the perfect break from city-life. Reconnect with nature, enjoy the abundance of wildlife, and the tranquility of Korrumbyn Creek, babbling alongside your Self-Contained Cabin or Powered/Unpowered Campsite. Enjoy a 'unique and magical' weekend away, or fun family holiday.



WOLLUMBIN PALMS RAINFOREST RETREAT

112 Mt Warning Road, Mount Warning
 0477 111 113 | stay@wprp.com.au
wollumbinpalms.com

The ultimate indulgent couples escape with private and unique luxury lodges set amongst 65-acres of forest, featuring lakes and streams, gardens, orchards and walking trails. Lodges include a Yurt, Javanese Temple and Earth House with views of Mt Warning including spa, fireplace, a/c, kitchenette, BBQ and plush furnishings. Pet Friendly.



MIDGINBIL ECO RESORT

252 Midginbil Road, Midginbil
 0428 419 769 | admin@midginbilecoresort.com.au
midginbilecoresort.com.au

Multi award winning Midginbil Eco Resort hosts country, destination weddings, retreats and large group events. Perched below the escarpments of Night Cap National Park in a lush rainforest setting on 400 acres in the stunning Tweed Valley. Accommodates up to 170 persons with a variety of accommodation and catering/self catering options.



THE TYALGUM HOTEL

39 Coolman Street, Tyalgum
 02 6679 3994 | info@thetyalgum.com.au
tyalgumhotel.com

Beautifully refurbished this 1926 established hotel offers thirteen rooms, expansive beer garden, Sports Bar, Bistro, Bottle shop, Children's Playground and pool. We invite you to take a drive and experience the country hospitality of The Tyalgum Hotel, nestled in the Tweed Caldera.



Tyalgum

IT'S A CALMING COUNTRY DRIVE TO TYALGUM, PASSING BY SCORES OF BLACK AND WHITE FRIESIAN DAIRY COWS THAT POP AGAINST THE GREEN OF THE VALLEY'S PADDOCKS.

Curving through the undulating landscape, alongside the clear waters of the Oxley River, are ever-changing views of Wollumbin Mount Warning as you round its many sides.

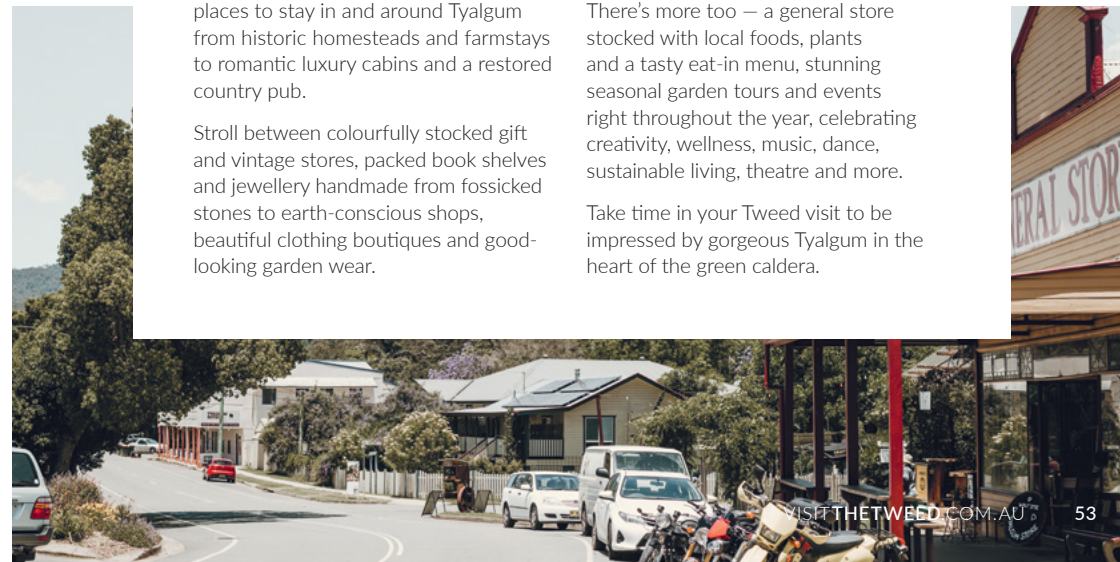
All this peace prepares you well for the conscious living energy of Tyalgum, boasting so many enterprises it will take some time to explore all that awaits on Coolman Street. If you need more time (always a good idea), there are gorgeous places to stay in and around Tyalgum from historic homesteads and farmstays to romantic luxury cabins and a restored country pub.

Stroll between colourfully stocked gift and vintage stores, packed book shelves and jewellery handmade from fossicked stones to earth-conscious shops, beautiful clothing boutiques and good-looking garden wear.

If all this browsing and buying leaves you hungry, there are plenty of options in town, from satisfying morning teas and sumptuous meals in an elegant heritage building to a country pub with delicious dishes from lunch to dinner. You'll also happen upon a gin bar, coffee roaster, bakery, beer brews and Friday night artisan pizzas served with a side of live music. Or grab a scoop from an authentic Italian gelateria.

There's more too — a general store stocked with local foods, plants and a tasty eat-in menu, stunning seasonal garden tours and events right throughout the year, celebrating creativity, wellness, music, dance, sustainable living, theatre and more.

Take time in your Tweed visit to be impressed by gorgeous Tyalgum in the heart of the green caldera.





FLUTTERBIES

Flutterbies Cottage Cafe is a gorgeous place to discover! You'll find an in-house coffee micro-roaster, an elegant High Tea Room, weekend French Bakehouse and lush back gardens. Flutterbies is fully licensed, and offers beautiful artisan wines, craft beer on tap, and an exclusive Gin Bar. Friday nights are for pizza and live music.



CAFE | 23-25 COOLMAN STREET,
TYALGUM NSW

PH | (02) 6679 3221

flutterbies.com.au



Bakehouse



Coffee



Flutterbucks Pizza

Discover...



at the end of

SHOPS TO BROWSE -

The Garden of Light Shop & Potting Shed, Flutterbies Tearoom, Signature Flutterbies Into The Pink Room. Plus the delightful Tuscany In Tyalgum in the back garden.

La MARKETTE LANE

and THE OLD BANK BUILDING

A meandering emporium of shops, boutiques and artisan studios nestled in the back gardens between Flutterbies and the Old Bank Building next door. An ever-unfolding moment!

a hidden gem



a country drive



CELESTIAL DEW OF TYALGUM celestialdewoftyalgum.com

A beautifully appointed four bedroom guest house in the heart of Tyalgum Village, located right next door to Flutterbies Cafe. A generous private balcony and sauna add to your enjoyment! **FOR BOOKINGS CALL | 0474 512 528**





Crystal Creek, Chillingham & Carool

TRAVERSING GREEN-CARPETED HILLS, THICKLY TREED PASTURES AND LUSH TROPICAL RAINFOREST, FIND YOUR WAY THROUGH SOME OF THE TWEED'S SUBLIME HINTERLAND SPOTS, WITH NATIONAL PARK TRAILS IN REACH AND FOOD EXPERIENCES TO SAVOUR.

At the foothills of the surrounding ranges and along the winding Rous River, Chillingham and nearby Crystal Creek are embraced by dense, verdant rainforest, creating a perfect backdrop for luxurious lodgings and restorative escapes.

On your country drive, plan a stop at Crystal Creek, where you'll find nurseries, roadside stalls and tempting cafes for creekside or tree shaded refreshments. Crystal Creek is also home to soothing overnight stays, from rainforest to farm settings.

Stop a while in serene Chillingham to visit the historic general store, stocked with farm-fresh foods and a sweet spot for coffee and cake. Also in town is a busy bush tucker farm with native foods grown alongside exotic fruits, available to enjoy as is, or take-home products.

The Carool hills are also home to a productive coffee plantation, where you can stay overnight in luxury lodgings and wake to a morning brew grown right here. Book ahead at an award-winning kitchen garden restaurant with flavours to feed both soul and appetite, with a menu that heroes fresh food grown onsite and sourced from local farms.

CRYSTAL CREEK CAFE & NURSERY

1004 Numinh Road, Crystal Creek
02 6679 1060 | hello@crystalcreekestate.com.au
crystalcreekestate.com.au

Crystal Creek Cafe & Nursery, a 10 minute drive from Murwillumbah. Book a private garden function with Chef-based seasonal menu, breakfast, lunch, picnics and pantry. Amazing coffee, house baked cakes, plants and gifts plus BYO Licence. Water views with turtles and fish swimming in the crystal clear waters. Ample parking, pet friendly and wheelchair access.



ORIGIN HOUSE CAROOL

113 Blissetts Road, Carool
0407 413 339 | zetascf@gmail.com
zetascOFFEE.com.au

Overlooking an award-winning coffee plantation with spectacular views of the Pacific Ocean and Gold Coast, this is the ultimate hinterland retreat. Delivering an architecturally designed, tranquil setting using sustainable principles, it is close to the attractions and highly awarded restaurants of the Tweed. Perfect for one or two couples to enjoy.



POTAGER

502 Carool Road, Carool
07 5590 7403 | info@potager.com.au
potager.com.au

Potager - The Northern Rivers Multi Award Winning Dining Destination. Set on a 10-acre farm in Carool, with ocean views over a flourishing Northern NSW valley sits Hatted restaurant Potager, a culinary destination popular with locals and visitors from afar. Customers are drawn by the sumptuous cuisine and the genuine hospitality that Peter and his team extend to every guest. Potager's commitment to the farm-to-table ethos not only ensures outstanding flavours but also supports the local community. Whether it's an intimate dinner or a memorable gathering, Potager promises a delightful journey for your taste buds and a warm embrace for your senses. All just a short 20-minute drive from the Gold Coast Airport.



Events in The Tweed

THERE'S ALWAYS SOMETHING HAPPENING IN THE TWEED! CELEBRATING THE BEST OF OUR REGION, FROM FOOD AND ART TO SPORT AND CULTURE, TAKE A LOOK AT OUR EVENTS CALENDAR TO PLAN YOUR NEXT TWEED GETAWAY.

JANUARY

Tweed Wedding Trail, multiple locations

For couples planning their special day, don't miss the Tweed Wedding Trail (Jan) and Winter Wedding Open Day (Jul) with over 130 local wedding suppliers and premium venues opening their doors over one day.

tcweddings.com.au

FEBRUARY

Tweed Coast Enduro, Pottsville

Fast, flat and friendly! Whether it's your first hit out, you're pushing for a new PB or training for a longer distance, this long course tri will cover any athlete's checklist!

tweedenduro.com.au

MARCH

Kingscliff Triathlon, Kingscliff

Held in November and March each year, the Kingy Tri is one of Australia's most popular tri events options for children and teams to first-timers and elite athletes.

kingsclifftri.com.au

MAY

Murwillumbah Arts Trail, Murwillumbah (biannual)

Showcases over 70 contemporary artists from The Tweed and surrounds, with pop-up exhibitions, galleries, street art, public art and film meshed with performance and live music.

murwillumbahartstrail.com.au

Kinship Festival, Murwillumbah

An annual event held in Murwillumbah with the aim of connecting children and families to Country, culture and a sense of community.

mccentre.org.au

Seas the Day, Kingscliff

The world's biggest female participation surf festival held over 2 days with shortboard and longboard contests, keynote talks on wellness, workshops in yoga, ice baths breath work and more.

seasthedaysurffestival.com

JUNE

World Environment Day, Murwillumbah

Uniting like-minded people in their choices and actions to protect, restore and enhance the environment.

wedfest.
calderaenvironmentcentre.org

SEPTEMBER

Tyalgum Music Festival, Tyalgum

Bringing together some of Australia's finest professional and emerging classical musicians, this long-running festival has string quartets, opera recitals, piano duets and pop-up concerts.

tyalgumfestival.com.au

NOVEMBER

Murwillumbah Show, Murwillumbah

Get amongst the Tweed community spirit and enjoy fun for all the family with a side show alley, rodeo, thrill rides, world class horse events, agri-displays, showbags, live music and more.

murwillumbahshow.com.au

To Market

CONNECT WITH OUR LOCAL TOWNS AND TALENTED PEOPLE AT ONE OF THE MANY REGULAR CRAFT, FARMERS AND SECOND-HAND MARKETS HELD RIGHT ACROSS THE REGION ALL YEAR ROUND. TAKE HOME FRESH PRODUCE, HAND-CRAFTED ART, COLLECTABLES AND LOTS OF FOND MEMORIES!

CHILLINGHAM MARKET	2ND SUNDAY; 8AM TO 1PM Chillingham Community Centre, 1469 Numinbah Rd, Chillingham
DURANBAH ROAD FARMERS MARKET	EVERY SATURDAY; 8AM TO 11AM Tropical Fruit World, 29 Duranbah Road, Duranbah
KINGSCLIFF BEACHSIDE MARKET	2ND + 4TH SATURDAY; 8AM TO 1PM Jack Bayliss Park, Marine Parade, Kingscliff
MAKERS AND FINDERS MARKET	3RD SATURDAY; 9AM TO 2PM Knox Park, 104 Wollumbin Street, Murwillumbah
MURWILLUMBAH FARMERS MARKET	EVERY WEDNESDAY; 7AM TO 11AM Murwillumbah Showgrounds, 37 Queensland Road, Murwillumbah
MURWILLUMBAH SHOWGROUND MARKET	4TH SUNDAY; 8AM TO 3PM Murwillumbah Showgrounds, 37 Queensland Road, Murwillumbah
POTTSVILLE BEACH MARKETS	1ST + 3RD SUNDAY; 7AM TO 1PM Philip Street Reserve, Pottsville
SALT VILLAGE MARKET	3RD SATURDAY; 8AM TO 2PM Central Park, Salt Village, Kingscliff
JACK EVANS BOAT HARBOUR MARKET	1ST SATURDAY; 8AM TO 2PM Jack Evans Boat Harbour, Tweed Heads
TWEED NIGHT MARKET	2ND + 4TH FRIDAY; 4PM TO 8PM Jack Evans Boat Harbour, Tweed Heads
TWEED HEADS MARKET	EVERY SUNDAY; 7AM TO 12PM Corner of Recreation and Florence Streets, Tweed Heads
TYALGUM VILLAGE MARKET	LAST SATURDAY; 9AM TO 3PM Celestial Dew Guesthouse Gardens, 21 Coolman Street, Tyalgum
UKI BUTTERY BAZAAR MARKET	3RD SUNDAY; 9AM TO 2PM 1454 Kyogle Road, Uki
UKI FARMERS MARKET	EVERY SATURDAY; 8AM TO 12:30PM Uki Hall, 1462 Kyogle Road, Uki

What's on
THE TWEED

From artisan markets to cultural festivals, art exhibitions to sporting events, discover what's on in The Tweed.
whatsontweed.com.au



Step Lightly, Be Well & Embrace Culture

MAKE YOUR TWEED HOLIDAY ONE OF WELLNESS, ENRICHING BODY, MIND AND SOUL THROUGH MINDFUL TIME IN NATURE AND EMBRACING STORIES OF OUR PEOPLE, PLACE AND CULTURE.

Feel Welcome Here

THE TWEED WELCOMES ALL VISITORS TO COME EXPLORE, IMMERSE AND ENJOY SOME FUN HOLIDAY TIME THAT'S ACCESSIBLE FOR ALL.

The Tweed is a place where travellers of all abilities are invited to take time out for a break away and discover all that our coastal and country villages have to offer, from food and drink to accommodation, touring and transport options. With wide-ranging accessible travel options and inclusive tourism operators on hand, any trip to The Tweed can be planned with ease and confidence.

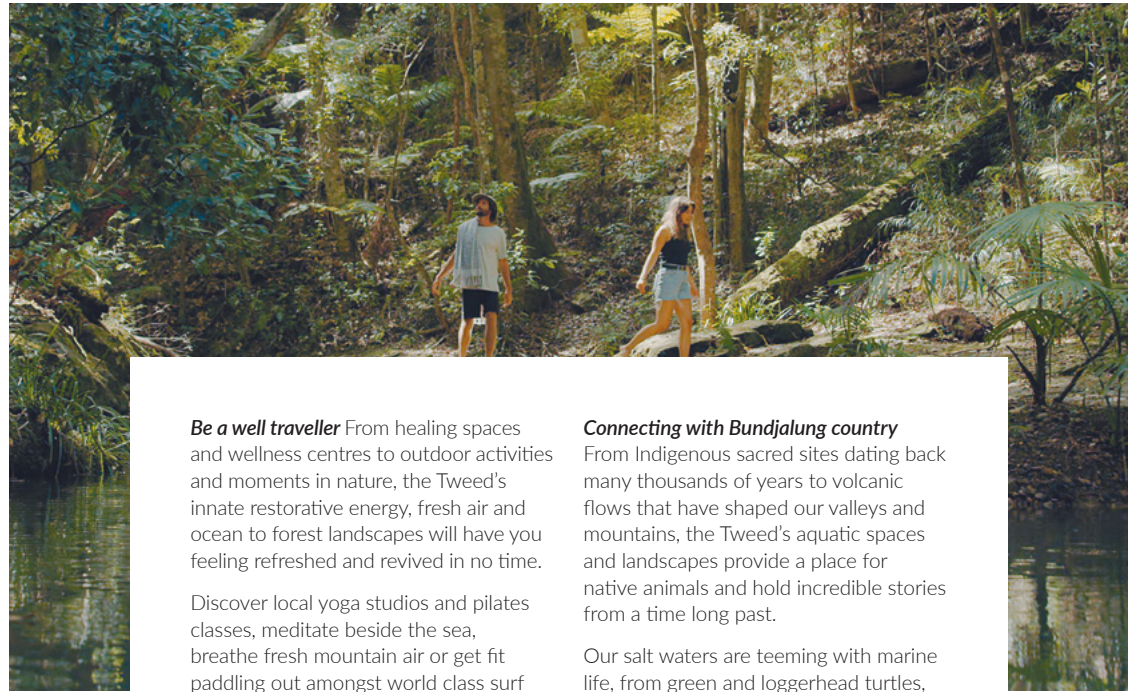
Visit award-winning breweries and distilleries, take a relaxing river boat tour, experience the Northern Rivers Rail Trail, browse leading art galleries and take time to discover a museum rich in fascinating local history. These Tweed must-do experiences all offer wheelchair access, with some offering additional features including free wheelchairs, mobility parking, lift access and facilities.

Cool down and refresh at some of our beautiful beaches with free beach

wheelchairs available to use courtesy of Tweed Shire Council. Or make a day of it at an accessible aquatic centre that features clear, flat pathways, accessible parking and change room facilities plus a mobility lift to gently access the pool.

When it comes to dining, the Tweed's major Clubs have great access and facilities for all travellers looking for a relaxed bite. Or you can book in for an award-winning restaurant experience, right on the Tweed River and with views to Wollumbin Mount Warning from a river terrace that's accessed via a comfortable stairlift chair.

Overnight stays are also easy in The Tweed with most hotels, motels and holiday parks catering for travellers with mobility requirements, from an accessible cottage at a working farm to a luxurious purpose built room in a beachfront hotel.



Be a well traveller From healing spaces and wellness centres to outdoor activities and moments in nature, the Tweed's innate restorative energy, fresh air and ocean to forest landscapes will have you feeling refreshed and revived in no time.

Discover local yoga studios and pilates classes, meditate beside the sea, breathe fresh mountain air or get fit paddling out amongst world class surf breaks. Hike one or more of our many national park tracks, take a run along endless sandy stretches that follow the beautiful coastline.

You can choose to eat healthy, fresh foods with low miles just about anywhere in The Tweed and especially at restaurants supporting our local producers and at working farms serving just-picked goodness on their cafe menus.

Connecting with Bundjalung country

From Indigenous sacred sites dating back many thousands of years to volcanic flows that have shaped our valleys and mountains, the Tweed's aquatic spaces and landscapes provide a place for native animals and hold incredible stories from a time long past.

Our salt waters are teeming with marine life, from green and loggerhead turtles, dolphins and whales in season, along with countless fish species, nudibranchs, rays, eels and octopus. Many of these call the small volcanic outcrop of Cook Island home, just off Fingal Head and declared an Aquatic Reserve in 1998.

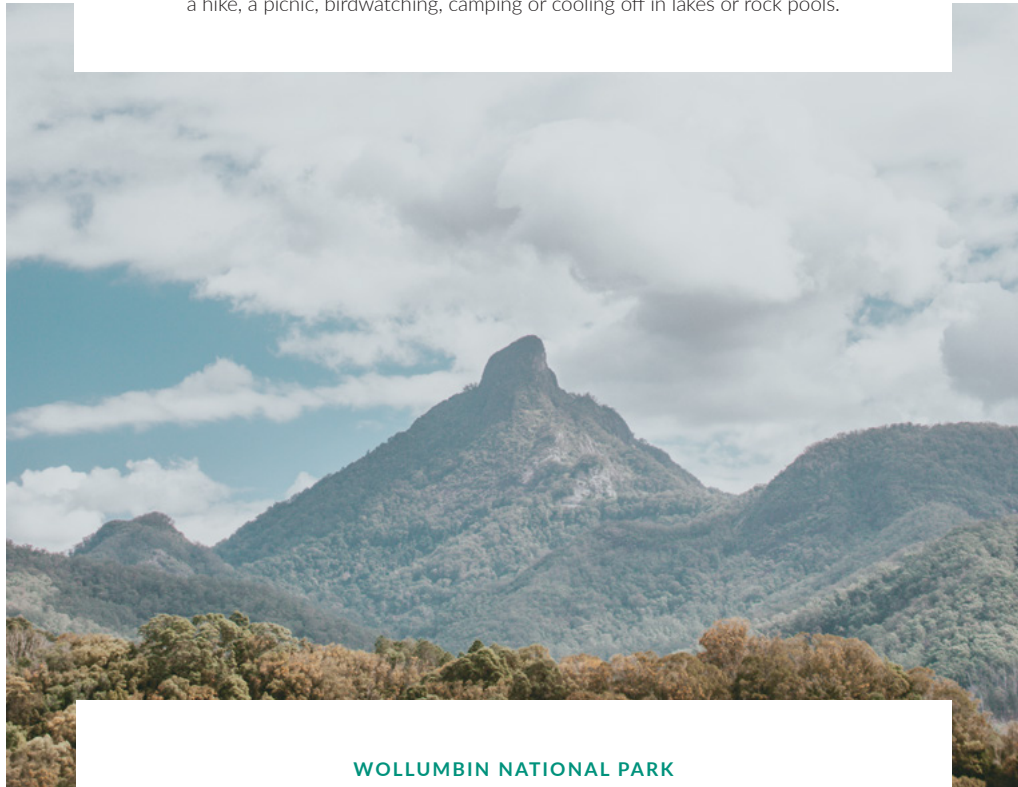
The mighty Tweed River flows from the valley to the sea and winds through the hinterland. Cruising the river is a scenic way to take in new views and learn more about this powerful waterway and its many cultural stories.



Naturally Gifted

HOME TO THE MAJESTIC WOLLUMBIN MOUNT WARNING AND COMPRISING THE GONDWANA RAINFORESTS OF AUSTRALIA – THE MOST EXTENSIVE SUBTROPICAL RAINFOREST IN THE WORLD WITH ANCIENT PLANTS AND ANIMALS FROM THE BEGINNING OF TIME – THE TWEED IS NATURALLY A PLACE FOR IMMERSING IN GREEN FORESTS AND FRESH AIR.

Read on to learn more about some of the area's must-visit national parks, whether for a hike, a picnic, birdwatching, camping or cooling off in lakes or rock pools.



WOLLUMBIN NATIONAL PARK

Home to the distinctive Wollumbin Mount Warning, a remnant central vent of an ancient volcano, Wollumbin National Park is a place of great sacred significance to the Bundjalung Indigenous people. Said to mean 'cloud catcher' in local Indigenous language, the peak of Wollumbin rises to a towering height of 1,157m above sea level and is a much-loved landmark by photographers and artists.

Note: The Wollumbin Summit Track remains closed at the time of publication. Visitors can still walk the serene and easy Lyrebird Track at the base of Wollumbin to get a feel for the natural beauty surrounding this stunning landmark. For up-to-date advice on visiting Wollumbin National Park, please go to nationalparks.nsw.gov.au



NIGHTCAP NATIONAL PARK & WHIAN WHIAN STATE CONSERVATION AREA

At the southern rim of the one-time volcano, you'll find nightcap oak trees and towering hoop pines, along with (endangered) Albert's lyrebird and Fleay's barred frog. Eight tracks, from 1.4km to 32km, can be explored on foot, by bike or on horseback. Keep an eye out for goannas, kookaburras, brush-tail possums, spotted-tailed quoll and koalas.

Be sure to visit Minyon Falls, camp beneath stars at Rummery Park campground or hike the 18km Historic Nightcap track.

CUDGEN NATURE RESERVE

Close to Cabarita Beach, this is a tranquil space for bird-spotting and relaxed picnics. It also encompasses Cudgen Lake, a hidden wetland surrounded by floodplain forests, making it a mecca for water-lovers with fishing, paddling, swimming, SUPing and sailing.

Pack a picnic, cast a line and spot waterbirds.

GIDJUM GULGANYI WALK

In 2024 a new multi-day walk will open from Mount Jerusalem National Park near Uki to Minyon Falls in Nightcap National Park. This 39km trail will traverse the traditional lands of the Widjabul Wia-bal and Minjungbal people of the Bundjalung Nation.

For more information head to nationalparks.nsw.gov.au

BORDER RANGES NATIONAL PARK

This large World Heritage-listed park protects untouched Gondwana-era rainforest and unique plants and animals, including Antarctic beech forests dating back 2,000 years. There are waterfalls, lookouts and 10 walking tracks, ranging from 200m to 10.5km. Note that unsealed roads are common in this area.

Try the short Palm Forest track, the more challenging Booyong Walk and don't miss Pinnacle Lookout.

MEBBIN NATIONAL PARK

Eucalypt trees, old growth forest, ancient figs and subtropical rainforest provide a safe haven for large owls, the giant barred frog, lace monitor lizards, glossy black cockatoos and red-legged pademelons. A vital habitat link, the park is popular with hikers and twitchers.

Explore the easy Byrrill Creek Walking Track or pitch a tent to overnight at Cutters Camp.

UNICORN FALLS

Discover a refreshing local secret with a small but serene waterfall that tempts those who want to explore off the beaten track. You'll find Unicorn Falls a short drive from Uki but you'll feel a world away. This scenic hidden spot, a favourite with locals, is set within the Mount Jerusalem National Park and is home to lush rainforests, endless green vistas, gorgeous waterfalls and fun rock pools.

Please use this information as a guide. For detailed planning information make sure you visit nationalparks.nsw.gov.au

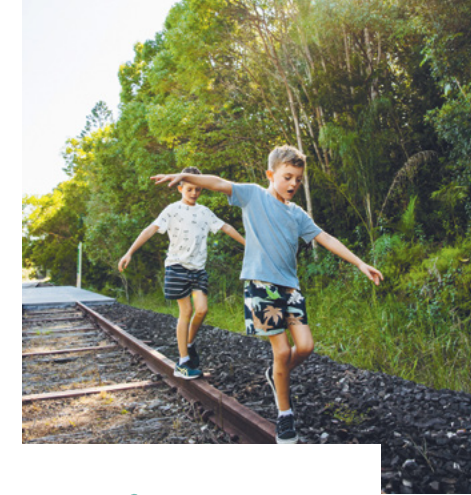




CURRUMBIN WILDLIFE SANCTUARY

28 Tomewin Street, Currumbin
07 5534 1266 | enquiries@cw.s.org.au
currumbinsanctuary.com.au

Visit the Gold Coast's #1 wildlife experience! See a Koala, pat a kangaroo, & feed the wild lorikeets. Meet dinosaurs and megafauna in the Extinction Trail, chill out at Wild Island Adventure Splash Zone, and get closer to exotic animals in Lost Valley. Watch Wild Skies Free Flight Bird Show or immerse yourself in ancient Aboriginal culture. Outback Springs is now open, a true-blue Aussie experience with farmyard animals, gem panning, billy tea and more! Watch our vets in action at one of the world's busiest wildlife hospitals. Learn how the Sanctuary's 15 conservation projects are saving precious species from extinction. With unforgettable daily shows and encounters, it's a fun day out for everyone!



Meet a Local

Murwillumbah Visitor Information Centre
Murwillumbah Railway Station, 284 Tweed Valley Way,
South Murwillumbah | 02 6672 1340

Kingscliff Visitor Information Centre
81 Marine Parade, Kingscliff | 02 6674 8064
info@thetweed.com.au | visitthetweed.com.au



STAY SOCIAL

Share your holiday snaps with us by tagging and using the following handles and hashtag!

#thetweed @thetweed @thetweed_nsw



CRYSTAL CASTLE & SHAMBHALA GARDENS

81 Monet Drive, Mullumbimby
02 6684 3111
crystalcastle.com.au

A short scenic journey into Byron Bay's hinterland lies a magical sanctuary.

Welcome to the home of the world's largest natural crystals, where you can sit in an ancient amethyst cave. Wander through the tranquil Shambhala Gardens, adorned with sacred statues and towering bamboo. Stand between two of the tallest crystals on earth. Touch the World Peace Stupa and join our daily Crystal Sound Healing.

Enjoy breathtaking views, a delicious lunch, and homemade desserts. Discover the Jewel of Byron.

Open 7 days per week
10am - 5pm (NSW time)



FEATURED PHOTOGRAPHERS

Australian Mountain
Bike Magazine
Cape Productions
Destination NSW
Kiff & Culture
Jeffrey Kieffer
Jewels Lynch
Max & Faye
Nearby Studios
Sally Singh Creative
Sam Brincat



The Tweed region is a part of the Northern Rivers community in New South Wales, Australia.

© Tweed Tourism Company 2024,
Design & Art by Interactivink Pty Ltd

DISCLAIMER The official visitor publication of Tweed Tourism Company (TTC). Text and photographic selection authorised by TTC. While every effort has been made to ensure information is true and correct at time of printing, Interactivink and TTC accept no responsibility for errors, omissions or incidents, damage or loss suffered from any use of this publication. Maps included are for promotional purposes only and should not be relied upon solely for navigation. Reproduction of any part of this publication is not permitted without the written permission of TTC.

A place to play



Tweed Holiday Parks, where holidays are just as you remember them, with space and time to relax and have fun with family and friends.

BOOK YOUR STAY
tweedholidayparks.com.au
1800 234 121



**TWEED
HOLIDAY
PARKS**